

Winterly Tree Tops Thank You Card

Project Sheet - Jun 26 2024

Carol Buckalew

inkybeestampers@gmail.com

<https://www.inkybeestampers.com>



I recently attended the Creativity Now event that Stampin' Up! hosted for demonstrators. It was such a fun event, and we had the opportunity to use products from an upcoming suite from the Sept-Dec- 2024 Mini Catalog! So this an extra early senak peek! You are going to love this suite of products! I used the **Winterly Tree Tops Bundle** along with the **Nests of Winter 12" x 12" Designer Series Paper** (envelope). Check out the new **Natural Tones Linen Thread** and **Earth Tones Shimmer Gems** also! There is also a beautiful embossing folder - the **Birch Wood 3D Embossing Folder** - but I did not use this folder on my project. Beautiful!

Supplies:

- Winterly Tree Tops Bundle (Stamp Set - Item #164184, Dies - Item #164065)
- Nests of Winter 12" x 12" Designer Series Paper - Item #164183
- Natural Tones Linen Thread - Item #164071
- Earth Tones Shimmer Gems - Item #164070
- Heartfelt Hexagon Punch
- Blending Brush
- Cardstock: Granny Apple Green, Real Red, Basic White

Winterly Tree Tops Thank You Card

Project Sheet - Jun 26 2024

Carol Buckalew

inkybeestampers@gmail.com

<https://www.inkybeestampers.com>

- Ink: Tuxedo Black Memento Ink, Mossy Meadow
- Stampin' Blends: Ivory, Bronze, Real Red, Cherry Cobbler, Granny Apple Green, Mossy Meadow

1. Card Cuts:

- Card Base - Cut 1 Granny Apple Green cardstock to 8-1/2" x 5-1/2", score at 4-1/4"
- Outside & Inside Mat - Cut 2 Real Red cardstock to 5-3/8" x 4-1/8"
- Outside Panel for Ink Blending - Cut 1 Basic White cardstock to 5-1/4" x 4"
- Panel for Die Cutting Negative Frame - Cut 1 piece of Mossy Meadow cardstock to 5-1/4" x 3-3/4"
- Sentiment Label - Cut 1 Granny Apple Green to approximately 3-1/2" x 2-3/4"
- Die Cut Birds - Cut 1 Basic White cardstock to approximately 3-1/2" x 3-1/2"
- Inside Panel - Cut 1 Basic White cardstock to 5-1/4" x 4"
- Envelope Flap - Cut 1 coordinating piece of designer series paper to 6" x 2-1/4"

2. I started off by creating a negative mask using the largest frame die from the Winterly Tree Tops Dies:

- The frame die was centered over a piece of Mossy Meadow cardstock measuring 5-1/4" x 3-3/4" and I ran the die and cardstock through my Stampin' Cut & Emboss Machine. You can use whatever cardstock you like, but I saved the frame cut out for a future project, so I used Mossy Meadow cardstock.
- I used some removable adhesive on the back of the negative from the die cut frame onto a piece of Basic White cardstock measuring 5-1/4" x 4" and I centered the negative over the white panel.
- A Blending Brush was used to blend Mossy Meadow ink around the negative.
- The negative was removed and rotated 180 degrees, then centered again over the white panel.
- I used a Blending Brush to blend more Mossy Meadow ink over the negative. The second blending was much lighter than the first.
- The negative was removed from the panel and I used my Blending Brush to blend more Mossy Meadow ink over the panel to darken the edges of the panel.
- The panel was then adhered to a Real Red mat, then adhered to the card front using Stampin' Dimensionals.

Winterly Tree Tops Thank You Card

Project Sheet - Jun 26 2024

Carol Buckalew

inkybeestampers@gmail.com

<https://www.inkybeestampers.com>



3. From the Winterly Tree Tops Stamp Set, I stamped the image of the two birds sitting on a branch in Tuxedo Black Memento ink onto a piece of white cardstock. I used Ivory and Real Red Stampin' Blends to color in the birds. A Bronze Stampin' Blend was used to color in the branches, and I used Real Red and Cherry Cobbler Stampin' Blends to color in the berries. I used a white gel pen to create small highlights on the berries. This image was then adhered to the upper right of the card front using Stampin' Dimensionals.

Winterly Tree Tops Thank You Card

Project Sheet - Jun 26 2024

Carol Buckalew

inkybeestampers@gmail.com

<https://www.inkybeestampers.com>



4. I stamped the "Sending thanks & much love" sentiment in Mossy Meadow ink onto a piece of Granny Apple Green cardstock. I used the Heartfelt Hexagon Punch to punch out the sentiment. I used a Blending Brush to darken the edges of the sentiment label using Mossy Meadow ink. The sentiment was then adhered to the card front using Stampin' Dimensionals and was positioned just below the birds.
5. I cut a length of Natural Tones Linen Thread and I separated the strands of thread then tied a bow. The bow was adhered just above the right side of the sentiment label using a Mini Glue Dot.
6. On the inside panel I stamped the wreath image from the Winterly Tree Tops Stamp Set at the bottom of the panel in Tuxedo Black Memento ink. I used Stampin' Blends in Granny Apple Green, Mossy Meadow and Real Red to color in the image. The panel was then adhered to a Real Red mat, then adhered to the inside of the card.

Winterly Tree Tops Thank You Card

Project Sheet - Jun 26 2024

Carol Buckalew

inkybeestampers@gmail.com

<https://www.inkybeestampers.com>



7. On the envelope front I partially stamped the wreath image using Tuxedo Black Memento ink. The wreath was colored in using Stampin' Blends as I did in Step #6 above.
8. A piece of Nests of Winter 12" x 12" Designer Series Paper was adhered to the envelope flap and I used a pair of paper snips to trim the excess paper away from the flap.
9. Three white Earth Tone Shimmer Gems were added to the card front to complete the project.

Winterly Tree Tops Thank You Card

Project Sheet - Jun 26 2024

Carol Buckalew

inkybeestampers@gmail.com

<https://www.inkybeestampers.com>



This completes the card! How lovely are these pretty birds! I colored these birds as cardinals, but you could also color them in to look like Tufted Titmouse birds also! The Winterly Tree Tops Bundle and Nests of Winter Designer Series Paper make for a lovely holiday or winter set!

Products used to create this card that are available now for purchase are included on the next page. The upcoming items from the Sept-Dec 2024 Mini Catalog will be available in early September to customers.

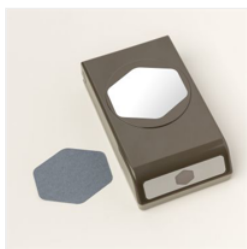
Winterly Tree Tops Thank You Card

Project Sheet - Jun 26 2024

Carol Buckalew

inkybeestampers@gmail.com

<https://www.inkybeestampers.com>



Heartfelt Hexagon
Punch - 162888

Price: \$23.00

Add to Cart



Blending Brushes -
153611

Price: \$15.00

Add to Cart



Granny Apple
Green 8-1/2" X 11"
Cardstock -
146990

Price: \$11.50

Add to Cart



Mossy Meadow 8-
1/2" X 11"
Cardstock -
133676

Price: \$11.50

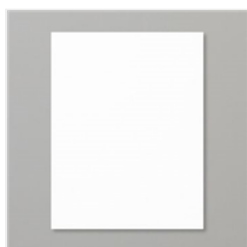
Add to Cart



Real Red 8-1/2" X
11" Cardstock -
102482

Price: \$11.50

Add to Cart



Basic White 8-1/2"
X 11" Cardstock -
159276

Price: \$13.00

Add to Cart



Mossy Meadow
Classic Stampin'
Pad - 147111

Price: \$9.00

Add to Cart



Tuxedo Black
Memento Ink Pad -
132708

Price: \$8.00

Add to Cart



Bronze & Ivory
Stampin' Blends
Combo Pack -
154922

Price: \$11.00

Add to Cart



Real Red Stampin'
Blends Combo
Pack - 154899

Price: \$11.00

Add to Cart



Cherry Cobbler
Stampin' Blends
Combo Pack -
154880

Price: \$11.00

Add to Cart



Granny Apple
Green Stampin'
Blends Combo
Pack - 154885

Price: \$11.00

Add to Cart



Mossy Meadow
Stampin' Blends
Combo Pack -
154890

Price: \$11.00

Add to Cart