

Meandering Meadows Bay Window Birthday Card

Project Sheet - Nov 8 2023

Carol Buckalew

inkybeestampers@gmail.com

<https://www.inkybeestampers.com>



This pretty Bay Window card was created using the new **Meandering Meadows 6" x 6" Designer Series Paper**. This beautiful paper is perfect for creating a Bay Window card! You can now find the Meandering Meadows 6" x 6" Designer Series Paper and the coordinating Garden Meadow Bundle in the Online Exclusives section of the online store...be sure to check them out! Let's take a look!

Supplies:

- Meandering Meadows 6" x 6" Designer Series Paper
- Garden Meadow Stamp Set
- Stylish Shapes Dies
- Linen Thread
- Adhesive-Backed Sparkle Gems
- Cardstock: Granny Apple Green, Orchid Oasis, Basic White
- Ink: Granny Apple Green, Tuxedo Black Memento Ink
- Stampin' Blends: Granny Apple Green, Orchid Oasis
- Adhesives: Multipurpose Liquid Glue, Stampin' Seal, Stampin' Dimensionals

Meandering Meadows Bay Window Birthday Card

Project Sheet - Nov 8 2023

Carol Buckalew

inkybeestampers@gmail.com

<https://www.inkybeestampers.com>

- Paper Trimmer
- Simply Scored Scoring Tool
- Stampin' Cut & Emboss Machine

1. Card Cuts:

- Card Base - Cut 1 Granny Apple Green cardstock to 11" x 4-1/4". Score at 1/4", 1-1/2", 3-1/4", 4-1/2", and 5-1/2"
- Outside Mats:
 - Cut 2 Orchid Oasis cardstock to 4-1/8" x 7/8"
 - Cut 2 Orchid Oasis cardstock to 4-1/8" x 1-1/8"
 - Cut 1 Orchid Oasis cardstock to 4-1/8" x 1-5/8"
- DSP Panels
 - Select a meadow scene from the Meandering Meadows Designer Series Paper Pack.
 - Cut the paper so that it measures 5" across and 4" tall.
 - Important: As you cut the designer series paper, keep the panels in the same order as you cut them.** Use a Paper Trimmer and cut at 3/4", 1", 1-1/2", and 1". You should have a remaining piece measuring 3/4", for a total of 5 panels.
- Scraps of Basic White and Granny Apple Green for the sentiment label and sentiment label mat.
- Inside Mat - Cut 1 Orchid Oasis cardstock to 4-1/8" x 3-3/8"
- Inside Panel - Cut 1 Basic White cardstock to 4" x 3-1/4"
- Envelope Flap - Cut 1 coordinating designer series paper to 6" x 2-1/4"

2. Use a Score Board to score all of the lines on the 11" x 4-1/4" card base. Fold the scorelines and burnish with a bone folder as follows:

- 1/4" Score Line - Valley Fold
- 1-1/2" Score Line - Mountain Fold
- 3-1/4" Score Line - Mountain Fold
- 4-1/2" Score Line - Valley Fold
- 5-1/2" Score Line - Mountain Fold

3. Open the card base and apply liquid glue between the 4-1/2" and 5-1/2" score lines and fold the card base closed. This provides a book-binding of sorts on the left of the card when closed.

4. Adhere the DSP Panels to their corresponding Orchid Oasis mats. Working from left to right, adhere the panels to the first four sections of the card front using glue. Set aside the right panel for now. **Important: Remember to keep the scene panels in the order that you cut them and when adhering to the card front. This gives the illusion of the scene looking through a Bay Window!**

Meandering Meadows Bay Window Birthday Card

Project Sheet - Nov 8 2023

Carol Buckalew

inkybeestampers@gmail.com

<https://www.inkybeestampers.com>



5. The 1/4" score line, or tab, will be tucked under the far-right red panel to give the Bay Window its shape. The last panel will be adhered to the far-right edge of the inside of the card. Open the card base and place the remaining matted panel on the right edge of the opened card base. Make sure that there is an equal reveal on the top, right and bottom edge around the panel. While holding the panel in place, close the card and carefully tuck the 1/4" tab under the panel you are holding against the card base. While holding the 1/4" tab in place, remove the panel then adhere Stampin' Dimensionals along the edge of the 1/4" tab. Adhere the panel to the Stampin' Dimensionals. The panel on the right becomes the "stop" for the 1/4" panel and helps to give the Bay Window its shape.
6. Stamp the sentiment "Hello" in Granny Apple Green ink onto a scrap of white cardstock. Use the second from the smallest circle dies from the Stylish Shapes Dies to cut out the sentiment. Use the third from the smallest circle die from the same die set and cut out a circle from Granny Apple Green cardstock. Adhere the sentiment label to the Granny Apple Green circle.
7. Tie a very loose bow using Linen Thread and adhere the bow to the left center of the center bay window panel using Stampin' Seal (this is the widest panel on the card front). Adhere

Meandering Meadows Bay Window Birthday Card

Project Sheet - Nov 8 2023

Carol Buckalew

inkybeestampers@gmail.com

<https://www.inkybeestampers.com>

the sentiment label over top of the bow using Stampin' Dimensionals. Note that the sentiment hangs over the edge of the center panel slightly and is adhered at an angle.

8. On the inside panel, stamp the sentiment "happy birthday!" in Granny Apple Green ink. Then, stamp the small flower image from the Garden Meadow Stamp Set onto the lower corner of the panel using Tuxedo Black Memento ink. Color in the flower image using Orchid Oasis and Granny Apple Green Stampin' Blends. Adhere the panel to its Orchid Oasis mat, then adhere the panel to the inside of the card.



9. Stamp the same small flower image onto the lower corner of the envelope front using Tuxedo Black Memento ink. Color the image using Orchid Oasis and Granny Apple Green Stampin' Blends. Caution: Place a scrap piece of paper or cardstock inside of the envelope before coloring to prevent bleed through of the markers.
10. Adhere the coordinating piece of designer series paper to the envelope flap and use a pair of paper snips to trim the excess paper away from the flap.
11. Adhere a single Adhesive-Backed Sparkle Gem to the sentiment label to finish up the card.

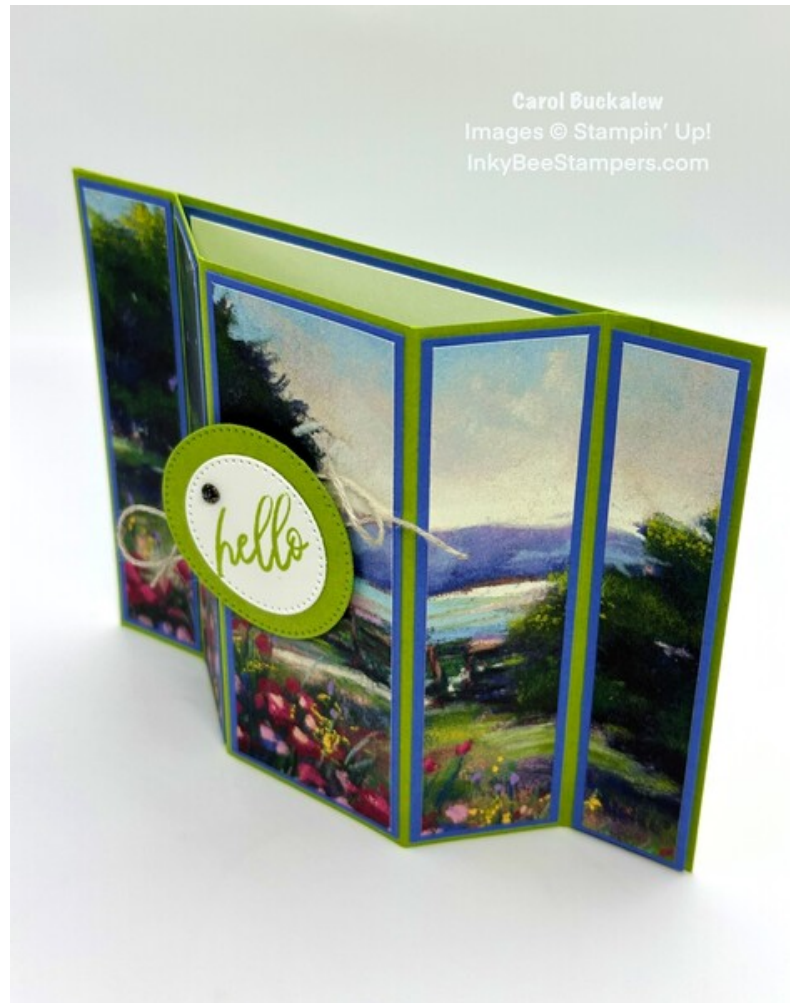
Meandering Meadows Bay Window Birthday Card

Project Sheet - Nov 8 2023

Carol Buckalew

inkybeestampers@gmail.com

<https://www.inkybeestampers.com>



This completes the card! Wow your friends and family by sending them a beautiful Bay Window card using the gorgeous paper from the Meandering Meadows Designer Series Paper pack!

Products used to create this card are included on the next page.

Meandering Meadows Bay Window Birthday Card

Project Sheet - Nov 8 2023

Carol Buckalew

inkybeestampers@gmail.com
<https://www.inkybeestampers.com>



Meandering Meadows 6" X 6" (15.2 X 15.2 Cm) Designer Series Paper - 162735

Price: \$12.50

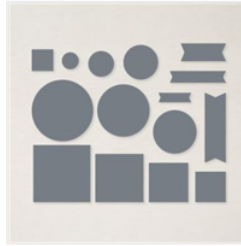
Add to Cart



Garden Meadow Photopolymer Stamp Set (English) - 162736

Price: \$24.00

Add to Cart



Stylish Shapes Dies - 159183

Price: \$30.00

Add to Cart



Linen Thread - 104199

Price: \$5.00

Add to Cart



Adhesive-Backed Sparkle Gems - 161288

Price: \$8.50

Add to Cart



Granny Apple Green 8-1/2" X 11" Cardstock - 146990

Price: \$10.00

Add to Cart



Orchid Oasis 8-1/2" X 11" Cardstock - 159267

Price: \$10.00

Add to Cart



Basic White 8-1/2" X 11" Cardstock - 159276

Price: \$10.50

Add to Cart



Basic White Medium Envelopes - 159236

Price: \$8.50

Add to Cart



Tuxedo Black Memento Ink Pad - 132708

Price: \$6.50

Add to Cart



Granny Apple Green Classic Stampin' Pad - 147095

Price: \$9.00

Add to Cart



Granny Apple Green Stampin' Blends Combo Pack - 154885

Price: \$10.00

Add to Cart



Orchid Oasis Stampin' Blends Combo Pack - 159223

Price: \$10.00

Add to Cart



Multipurpose Liquid Glue - 110755

Price: \$5.50

Add to Cart



Stampin' Seal - 152813

Price: \$8.00

Add to Cart

Meandering Meadows Bay Window Birthday Card

Project Sheet - Nov 8 2023

Carol Buckalew

inkybeestampers@gmail.com
<https://www.inkybeestampers.com>



Stampin'
Dimensionals -
104430

Price: \$4.25

Add to Cart



Paper Trimmer -
152392

Price: \$26.00

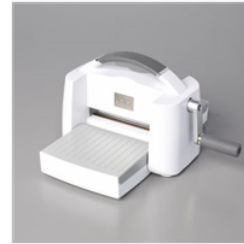
Add to Cart



Simply Scored
Scoring Tool -
122334

Price: \$36.00

Add to Cart



Stampin' Cut &
Emboss Machine -
149653

Price: \$128.00

Add to Cart