

Pretty in Pink Bold Bouquet Mother's Day Card

Project Sheet - May 11 2023

Carol Buckalew

inkybeestampers@gmail.com

<https://www.inkybeestampers.com>



This oh-so-pretty in pink Mother's Day card was created using the Bold Bouquet Bundle and the Delightfully Eclectic 12" x 12" Designer Series Paper. I grabbed the sentiments from the Best Family Ever Stamp Set and the Share a Milkshake Stamp Set. Yes, this card uses quite a few supplies, but I'm a firm believer in using what you have! If you don't have an item on the list below...improvise! Let's get started!

Supplies:

- Bold Bouquet Bundle
- Delightfully Eclectic 12" x 12" Designer Series Paper
- Best Family Ever Stamp Set
- Share a Milkshake Stamp Set
- Basics 3D Embossing Folders
- Stylish Shapes Dies
- Sheer Ribbon Combo Pack
- Rhinestone Basic Jewels
- Sponge Daubers

Pretty in Pink Bold Bouquet Mother's Day Card

Project Sheet - May 11 2023

Carol Buckalew

inkybeestampers@gmail.com

<https://www.inkybeestampers.com>

- Paper: Basic White, Berry Burst, Bubble Bath
- Ink: Bubble Bath, Berry Burst, Crushed Curry, Lost Lagoon
- Stampin' Blends: Berry Burst
- Adhesives: Multipurpose Liquid Glue, Mini Glue Dots, Stampin' Seal, Stampin' Dimensionals
- Paper Trimmer
- Stampin' Cut & Emboss Machine

1. Card Cuts:

- Card Base - Cut 1 Berry Burst cardstock to 11" x 4-1/4", score at 5-1/2"
- Panel for Embossing - Cut 1 Basic White cardstock to 4-3/4" x 3-1/2"
- Mat - Cut 1 Berry Burst cardstock to 4-3/8" x 3-1/8"
- DSP Panel - Cut 1 pink and white stripe pattern from the Delightfully Eclectic DSP to 4-1/4" x 3"
- Scraps of Basic White for stamping and die cutting flowers and leaves and sentiment label
- Inside Mat - Cut 1 Bubble Bath cardstock to 4-7/8" x 3-5/8"
- Inside Panel - Cut 1 Basic White cardstock to 4-3/4" x 3-1/2"
- Envelope Flap - Cut 1 coordinating DSP to 6" x 2-1/2"

2. The large flowers on the card front are multi-colored. Stamp 3 large flowers from the Bold Bouquet Stamp Set. Ink the stamp up in Bubble Bath ink, then use a sponge dauber to dab Berry Burst ink around the edges of the stamp. Stamp onto a piece of white cardstock. Repeat 2 more times. Use the coordinating die from the Bold Bouquet Dies set to cut out the flowers. Use a separate sponge dauber to lightly dab Crushed Curry ink around the flowers - just next to the Berry Burst ink. Use the dark shade of a Berry Burst Stampin' Blend to dot in the stamens at the center of the flowers.
3. Using the Bold Bouquet Stamp Set, stamp 4 leaves in Lost Lagoon ink onto white cardstock then use the coordinating die/s to cut out the images.
4. Stamp the sentiment "Mom" onto a piece of white cardstock using Berry Burst ink. Use the 2nd to smallest circle die from the Stylish Shapes Dies set to cut out.
5. Use the cross-hatch embossing folder from the Basics 3D Embossing Folders set to emboss the white panel measuring 4-3/4" x 3-1/2". Adhere the embossed panel to the card front.
6. Adhere the DSP panel to the Berry Burst mat. Wrap a length of pink Sheer Ribbon around the left side of this panel and secure the ends to the back of the card with a small amount of Stampin' Seal. Adhere the panel to the card front using Stampin' Dimensionals. Position the panel so that it is centered from top to bottom and so that the right edge of the panel is approximately a 1/4" in from the right side of the card base.
7. Arrange the flowers over the center of the ribbon in a circular pattern and adhere to the striped DSP panel using liquid glue. Only apply glue to the flower centers to allow for tucking in of the leaves. Tuck the leaves around the flowers and adhere with liquid glue.
8. Adhere the sentiment label to the center of the flower arrangement using Stampin' Dimensionals.

Pretty in Pink Bold Bouquet Mother's Day Card

Project Sheet - May 11 2023

Carol Buckalew

inkybeestampers@gmail.com

<https://www.inkybeestampers.com>

9. Tie a bow using pink Sheer Ribbon and adhere the bow to the lower left of the sentiment label using a Mini Glue Dot.
10. Use a Berry Burst Stampin' Blend to color 5 Rhinestone Basic Jewels. Adhere the rhinestones around the card front.



11. On the inside panel, ink up the large flower stamp from the Bold Bouquet Stamp Set in Bubble Bath ink then use a sponge dauber to tap Berry Burst ink around the stamp edges. Stamp the flower onto the lower left of the panel. Use a separate sponge dauber to lightly tap Crushed Curry ink around the edges of the Berry Burst ink. Use the dark shade of a Berry Burst Stampin' Blend to dot in the stamens on the flower center. Use the smallest leaf stamp and stamp leaves around the flower using Lost Lagoon ink.

Pretty in Pink Bold Bouquet Mother's Day Card

Project Sheet - May 11 2023

Carol Buckalew

inkybeestampers@gmail.com

<https://www.inkybeestampers.com>



12. Use the sentiment "Life is Sweeter with You" from the Share a Milkshake Stamp Set and stamp onto the inside panel in Berry Burst ink. Adhere the inside panel to its Bubble Bath mat, then adhere this unit to the inside of the card.
13. Stamp the same large flower onto the envelope front using the same directions as in Step #11 above.
14. Adhere the coordinating piece of DSP to the envelope flap and trim the excess paper away from the flap.

Pretty in Pink Bold Bouquet Mother's Day Card

Project Sheet - May 11 2023

Carol Buckalew

inkybeestampers@gmail.com

<https://www.inkybeestampers.com>



This completes the card! Berry Burst and Bubble Bath are exceptionally pretty together, and the white and pink striped DSP and multi-tone flowers just add to this card's soft look! I hope you give it a try!

Products used to create this card are included on the next page.

Pretty in Pink Bold Bouquet Mother's Day Card

Project Sheet - May 11 2023

Carol Buckalew

inkybeestampers@gmail.com

<https://www.inkybeestampers.com>



Bold Bouquet Bundle - 161241

Price: \$43.00

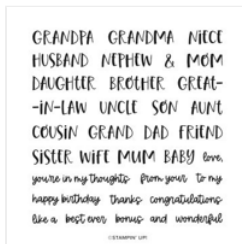
Add to Cart



Delightfully Eclectic 12" X 12" (30.5 X 30.5 Cm) Designer Series Paper - 161640

Price: \$30.00

Add to Cart



Best Family Ever Photopolymer Stamp Set (English) - 160720

Price: \$24.00

Add to Cart



Share A Milkshake Photopolymer Stamp Set (English) - 160394

Price: \$19.00

Add to Cart



3/8" (1 Cm) Sheer Ribbon Combo Pack - 161635

Price: \$12.50

Add to Cart



Rhinestone Basic Jewels - 144220

Price: \$6.00

Add to Cart



Basics 3D Embossing Folders - 161598

Price: \$30.00

Add to Cart



Stylish Shapes Dies - 159183

Price: \$30.00

Add to Cart



Sponge Daubers - 133773

Price: \$5.50

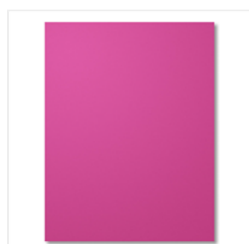
Add to Cart



Basic White 8-1/2" X 11" Cardstock - 159276

Price: \$10.50

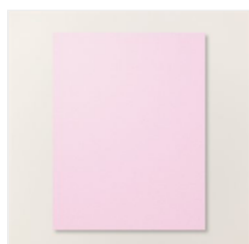
Add to Cart



Berry Burst 8-1/2" X 11" Cardstock - 144243

Price: \$10.00

Add to Cart



Bubble Bath 8-1/2" X 11" Cardstock - 161718

Price: \$10.00

Add to Cart



Basic White Medium Envelopes - 159236

Price: \$8.50

Add to Cart



Bubble Bath Classic Stampin' Pad - 161664

Price: \$9.00

Add to Cart



Berry Burst Classic Stampin' Pad - 147143

Price: \$9.00

Add to Cart

Pretty in Pink Bold Bouquet Mother's Day Card

Project Sheet - May 11 2023

Carol Buckalew

inkybeestampers@gmail.com

<https://www.inkybeestampers.com>



Crushed Curry
Classic Stampin'
Pad - 147087

Price: \$9.00

Add to Cart



Lost Lagoon
Classic Stampin'
Pad - 161678

Price: \$9.00

Add to Cart



Berry Burst
Stampin' Blends
Combo Pack -
161681

Price: \$10.00

Add to Cart



Multipurpose
Liquid Glue -
110755

Price: \$5.50

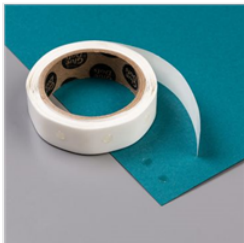
Add to Cart



Stampin' Seal -
152813

Price: \$8.00

Add to Cart



Mini Glue Dots -
103683

Price: \$5.75

Add to Cart



Stampin'
Dimensionals -
104430

Price: \$4.25

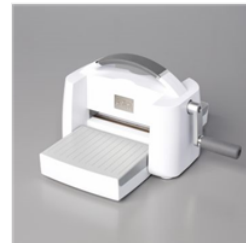
Add to Cart



Paper Trimmer -
152392

Price: \$26.00

Add to Cart



Stampin' Cut &
Emboss Machine -
149653

Price: \$128.00

Add to Cart