

Countryside Inn Thank You Card

Project Sheet - Apr 21 2023

Carol Buckalew

inkybeestampers@gmail.com

<https://www.inkybeestampers.com>



I used the pretty Countryside Inn 12" x 12" Designer Series Paper, the Countryside Blossoms Embossing Folder and the Timeless Arrangements Bundle to create today's card. These items will be available with the release of the 2023-2024 Annual Catalog on May 2. Let's get started!

Supplies:

- Countryside Inn 12" x 12" Designer Series Paper (161467)
- Timeless Arrangements Bundle (161526)
- Countryside Blossoms Embossing Folder (161473)
- Boho Blue Textured Ribbon (161631)
- Baker's Twine Essentials Pack
- Boho Blue Stampin' Blends (161659)
- Paper: Boho Blue (161724), Night of Navy, Basic White
- Ink: Night of Navy
- Adhesives: Mini Glue Dots, Stampin' Seal, Stampin' Dimensionals, Multipurpose Liquid Glue
- Paper Trimmer
- Stampin' Cut & Emboss Machine

Countryside Inn Thank You Card

Project Sheet - Apr 21 2023

Carol Buckalew

inkybeestampers@gmail.com

<https://www.inkybeestampers.com>

1. Card Cuts:

- Card Base - Cut 1 Boho Blue cardstock to 8-1/2" x 5-1/2", score at 4-1/4"
- Outside & Inside Mats - Cut 2 Night of Navy to 5-1/4" x 4"
- DSP Panel - Cut 1 Floral DSP from the Countryside Inn DSP pack to 5-1/8" x 3-7/8"
- Scraps of Basic White and Night of Navy for die cutting
- Inside Panel - Cut 1 Basic White cardstock to 5-1/8" x 3-7/8"
- Envelope Flap - Cut 1 coordinating DSP to 6" x 2-1/2"

2. Start by embossing the DSP Panel using the Countryside Blossoms Embossing Folder. This is the only piece of DSP in the Countryside Inn DSP pack that this embossing folder will line up with. Adhere the embossed panel to one of the Night of Navy mats. Use a small amount of Stampin' Seal on the back of the card and adhere the ends of a length of Boho Blue Textured Ribbon. Position the ribbon approximately 1-1/2" from the bottom of the panel. Adhere the matted DSP panel to the front of the card base.
3. Use the shorter/taller sentiment label die from the Timeless Arrangements Dies set and cut 1 sentiment label from Basic White cardstock. Use the leaf die and cut 1 from Night of Navy cardstock.
4. From the Timeless Arrangements Stamp Set, stamp the sentiments (there are two) "A very BIG" and "thanks" onto the die cut sentiment label using Night of Navy ink. Adhere the die cut leaf unit to the back, top of the sentiment label. Adhere the sentiment label to the card front using Stampin' Dimensionals and position over the ribbon and flush with the right edge of the panel.
5. Tie a small bow from white Baker's Twine and adhere the bow to the upper left corner of the sentiment label using a Mini Glue Dot.
6. On the inside panel, stamp the small flower two times in Night of Navy ink onto the lower portion of the panel. Use Boho Blue Stampin' Blends to color in the flowers and leaves. Stamp the same images on the envelope front and color.

Countryside Inn Thank You Card

Project Sheet - Apr 21 2023

Carol Buckalew

inkybeestampers@gmail.com

<https://www.inkybeestampers.com>



7. Adhere the inside panel to the Night of Navy mat then adhere this unit to the inside of the card.
8. Adhere a coordinating piece of DSP to the envelope flap and trim the excess paper away from the flap to finish off the envelope.

Countryside Inn Thank You Card

Project Sheet - Apr 21 2023

Carol Buckalew

inkybeestampers@gmail.com

<https://www.inkybeestampers.com>



This completes the card!

Countryside Inn Thank You Card

Project Sheet - Apr 21 2023

Carol Buckalew

inkybeestampers@gmail.com

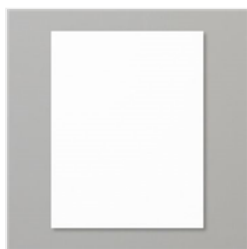
<https://www.inkybeestampers.com>



Baker's Twine
Essentials Pack -
155475

Price: \$11.00

Add to Cart



Basic White 8-1/2"
X 11" Cardstock -
159276

Price: \$10.25

Add to Cart



Night Of Navy 8-
1/2" X 11"
Cardstock -
100867

Price: \$9.25

Add to Cart



Basic White
Medium Envelopes
- 159236

Price: \$7.50

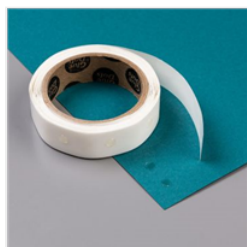
Add to Cart



Stampin'
Dimensionals -
104430

Price: \$4.25

Add to Cart



Mini Glue Dots -
103683

Price: \$5.25

Add to Cart



Stampin' Seal -
152813

Price: \$8.00

Add to Cart



Multipurpose
Liquid Glue -
110755

Price: \$4.00

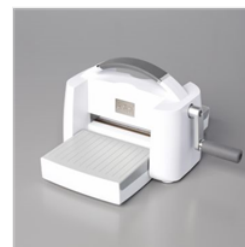
Add to Cart



Paper Trimmer -
152392

Price: \$25.00

Add to Cart



Stampin' Cut &
Emboss Machine -
149653

Price: \$125.00

Add to Cart