

# Countryside Corners Love You Card

Project Sheet - Apr 13, 2023

Carol Buckalew

[inkybeestampers@gmail.com](mailto:inkybeestampers@gmail.com)

<https://www.inkybeestampers.com>



I used the **Country Corners Bundle** and the beautiful **Countryside Inn 12 x 12 Designer Series Paper** to create my card for today! I also used components from the **Timeless Arrangements Bundle**. These are all upcoming products from the new 2023-2024 Annual Catalog which goes live for customer orders beginning on May 2. Do you love shades of blue? If so, you'll love this collection!

## Supplies:

- Countryside Corners Bundle (161472)
- Timeless Arrangements Bundle (161526)
- Countryside Inn 12" x 12" Designer Series Paper (161467)
- Balmy Blue & White Variegated Ribbon
- 2023-2025 In Color Dots (161620)
- Paper: Boho Blue, Misty Moonlight, Night of Navy, Basic White
- Ink: Boho Blue, Night of Navy
- Adhesives: Multipurpose Liquid Glue, Stampin' Seal, Stampin' Dimensionals
- Paper Trimmer

# Countryside Corners Love You Card

Project Sheet - Apr 13, 2023

Carol Buckalew

[inkybeestampers@gmail.com](mailto:inkybeestampers@gmail.com)

<https://www.inkybeestampers.com>

- Stampin' Cut & Emboss Machine

## 1. Card Cuts:

- Card Base - Cut 1 Night of Navy cardstock to 11" x 4-1/4", score at 5-1/2"
- DSP Panel - Cut 1 Bunny print from the Countryside Inn DSP to 5-3/8" x 4-1/8"
- DSP Strip - Cut 1 Night of Navy floral print from the Countryside Inn to 5-1/2" x 2"
- Scrap of Basic White cardstock measuring approximately 5-1/4" x 3-3/4" for stamping and die cutting octagon
- Scraps of Boho Blue and Misty Moonlight cardstock for stamping and die cutting flowers
- Sentiment Label - Cut 1 Basic White cardstock to approximately 2-1/2" x 7/8"
- Sentiment Label Mat - Cut 1 Night of Navy cardstock to approximately 3" x 1-1/2"
- Inside Mat - Cut 1 Misty Moonlight cardstock to 5-3/8" x 4-1/8"
- Inside Panel - Cut 1 Basic White cardstock to 5-1/4" x 4"
- Envelope Flap - Cut 1 coordinating DSP to 6" x 2-1/2"

2. Adhere the DSP Panel of the Bunny print to the card front. Then, adhere the Night of Navy floral print DSP strip on top of the panel you just adhered. Center the strip from left to right. The top and bottom edges should be flush with the card base.

3. Onto a piece of Basic White cardstock, stamp the large octagon image in Boho Blue ink. You will need the largest stamping block, Block F, to stamp this image. Use the second to largest die from the Countryside Corners Dies set to die cut the octagon. Adhere the octagon to the center of the card front using Stampin' Dimensionals.

# Countryside Corners Love You Card

Project Sheet - Apr 13, 2023

Carol Buckalew

[inkybeestampers@gmail.com](mailto:inkybeestampers@gmail.com)

<https://www.inkybeestampers.com>



4. Use the dies shown below from the Timeless Arrangements Bundle Dies set to die cut 1 single flower from Boho Blue cardstock and the double flower from Misty Moonlight cardstock.



# Countryside Corners Love You Card

Project Sheet - Apr 13, 2023

Carol Buckalew

[inkybeestampers@gmail.com](mailto:inkybeestampers@gmail.com)

<https://www.inkybeestampers.com>

5. From the Countryside Corners Dies set, cut the larger sentiment label from Basic White cardstock. Stamp the sentiment "You're my everything" from the Timeless Arrangements Bundle using Night of Navy ink. Use the smallest octagonal die from the Countryside Corners Dies set to cut an octagon from Night of Navy cardstock - this is the mat for the sentiment label. Adhere the sentiment label to its Night of Navy mat.
6. Apply a small amount of Stampin' Seal to the white stamped octagon on the card front - about two-thirds of the way down and slightly to the left of center. Use a length of Balmy Blue & White Variegated Ribbon and fold the ribbon in half. Adhere the ribbon to the area of Stampin' Seal.
7. Adhere the flowers, from Step #4 above, behind the top of the sentiment label. Adhere the sentiment label over the ribbon using a combination of liquid glue and Stampin' Dimensionals.
8. Adhere a single blue 2023-2025 In Color Dot on the sentiment label.
9. Using the Timeless Arrangements Bundle, stamp the sentiment "Just can't...enough" in Boho Blue ink onto the inside panel. Then, stamp the sentiment "Love you" in Night of Navy ink between the previously stamped sentiment. Use the small flower cluster stamp to stamp several flowers onto the lower corner of the inside panel using Boho Blue ink. Adhere the inside panel to its Boho Blue mat, then adhere this unit to the inside of the card.

# Countryside Corners Love You Card

Project Sheet - Apr 13, 2023

Carol Buckalew

[inkybeestampers@gmail.com](mailto:inkybeestampers@gmail.com)

<https://www.inkybeestampers.com>



10. Adhere a coordinating piece of DSP to the envelope flap and trim the excess paper away from the flap.

# Countryside Corners Love You Card

Project Sheet - Apr 13, 2023

Carol Buckalew

[inkybeestampers@gmail.com](mailto:inkybeestampers@gmail.com)

<https://www.inkybeestampers.com>



This completes the card! I am loving all of the blues in this collection! This is a must have Suite!

Additional products used to create this card are included on the next page. New, upcoming product numbers are listed above under "Supplies".



# Countryside Corners Love You Card

Project Sheet - Apr 13, 2023

Carol Buckalew

[inkybeestampers@gmail.com](mailto:inkybeestampers@gmail.com)

<https://www.inkybeestampers.com>



Balmy Blue/White  
1/2" (1.3 Cm)  
Variegated Ribbon  
- 160448

Price: \$9.00

Add to Cart



Night Of Navy 8-  
1/2" X 11"  
Cardstock -  
100867

Price: \$9.25

Add to Cart



Basic White 8-1/2"  
X 11" Cardstock -  
159276

Price: \$10.25

Add to Cart



Basic White  
Medium Envelopes  
- 159236

Price: \$7.50

Add to Cart



Night Of Navy  
Classic Stampin'  
Pad - 147110

Price: \$8.00

Add to Cart



Stampin' Seal -  
152813

Price: \$8.00

Add to Cart



Multipurpose  
Liquid Glue -  
110755

Price: \$4.00

Add to Cart



Stampin'  
Dimensionals -  
104430

Price: \$4.25

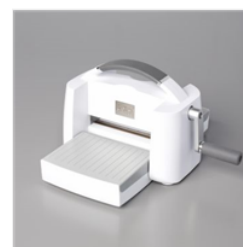
Add to Cart



Paper Trimmer -  
152392

Price: \$25.00

Add to Cart



Stampin' Cut &  
Emboss Machine -  
149653

Price: \$125.00

Add to Cart