

Stampin' Up! Seaside Bay Thank You Card for Amy's Inkin' Krew Blog Hop

Project Sheet - Dec 13 2022

Carol Buckalew

inkybeestampers@gmail.com

<https://www.inkybeestampers.com>



This is the first time I have used the Seaside Bay Bundle and the By the Bay 6" x 6" Specialty DSP and I can confidently say that it is at the top of my favorites list. I love the images in the set and the paper is beautiful! And, there are dies in the set that cut images on some of the papers! Let's get started!

1. Card Cuts:

- Card Base - Cut 1 Night of Navy cardstock to 8-1/2" x 5-1/2", score at 4-1/4"
- Mats - Cut 2 Coastal Cabana cardstock to 5-3/8" x 4-1/8"
- DSP Panel - Cut 1 of the shoreline pattern papers from the By the Bay Specialty DSP pack to 5-1/4" x 4"
- Die Cut the following using the Seaside Bay Dies set:
 - Clam Shell that folds in half - Cut 1 from Gold & Rose Gold 6" x 6" Metallic Specialty Paper
 - Clam Shell that folds in half - Cut 1 from Soft Suede cardstock

Stampin' Up! Seaside Bay Thank You Card for Amy's Inkin' Krew Blog Hop

Project Sheet - Dec 13 2022

Carol Buckalew

inkybeestampers@gmail.com

<https://www.inkybeestampers.com>

Bird - Cut 1 from the By the Bay 6" x 6" Specialty DSP

Sentiment Label - Cut 1 from the wood plank pattern from the By the Bay 6" x 6" Specialty DSP using the 3rd smallest die from the Layering Circles Dies set

Small Clam Shell - Cut 1 from a scrap of Petal Pink cardstock

Large Grasses - Cut 2 from scraps of Mint Macaron cardstock

Small Grass - Cut 1 from scrap of Mint Macaron cardstock

Inside Panel - Cut 1 Basic White to 5-1/4" x 4"

Envelope Flap - Cut 1 coordinating DSP to 6" x 2-1/2"

2. Start by adhering the DSP panel to one of the Coastal Cabana mats, then adhere this unit to the card front. I chose a piece of the By the Bay Specialty DSP that has a shoreline scene.
3. Using the "sand" stamp, second generation stamp sand along the shoreline of the DSP panel in Soft Suede ink.
4. From the die cut DSP wood plank print circle, stamp the sentiment "You are a pearl, rare and precious" in Soft Suede ink. Adhere the sentiment label to the card front using Stampin' Dimensionals. Place the sentiment label in the top right of the card front.
5. Adhere the two large die cut grasses at the shoreline of the DSP panel on the left-hand side. Adhere the small grass on the right side and slightly overlapping the sentiment label.
6. Adhere the Soft Suede clam shell to the inside of the gold clam shell, making sure to line up the edges. Fold the clamshell in half at the score line made by the die and adhere the partially open clam shell to the card front using Stampin' Dimensionals. Place the clam shell over the base of the large grasses.
7. Adhere the die cut bird to the card front, just to the right of the gold clam shell.
8. Adhere the small clam shell over the base of the small grass.
9. Adhere five of the small Flat Adhesive-backed Pearls along the shoreline. Place one large pearl inside of the gold clam shell.

Stampin' Up! Seaside Bay Thank You Card for Amy's Inkin' Krew Blog Hop

Project Sheet - Dec 13 2022

Carol Buckalew

inkybeestampers@gmail.com

<https://www.inkybeestampers.com>



10. Tie a bow using Night of Navy Bordered Ribbon and adhere the bow just above the gold clam shell using a Mini Glue Dot.
11. On the inside panel, use a blending brush to blend Balmy Blue ink across the top two thirds of the panel, leaving some white areas to give the appearance of clouds. Using a separate blending brush, lightly blend Soft Suede ink across the bottom one third of the panel. Use the "sand" stamp to second-generation stamp sand across the top of the blended Soft Suede. Stamp the sentiment "Thank you for everything" in Soft Suede ink. Adhere the panel to the remaining mat in Coastal Cabana, then adhere this unit to the inside of the card.

Stampin' Up! Seaside Bay Thank You Card for Amy's Inkin' Krew Blog Hop

Project Sheet - Dec 13 2022

Carol Buckalew

inkybeestampers@gmail.com

<https://www.inkybeestampers.com>



12. On the envelope front, stamp the image of the three shells and sand in Soft Suede ink. Use blending brushes to lightly blend Balmy Blue ink for sky and Soft Suede ink for sand over this image.
13. Adhere a piece of coordinating DSP to the envelope flap and trim the excess paper away from the flap to finish off the envelope.

Stampin' Up! Seaside Bay Thank You Card for Amy's Inkin' Krew Blog Hop

Project Sheet - Dec 13 2022

Carol Buckalew

inkybeestampers@gmail.com

<https://www.inkybeestampers.com>



The card is complete! This set makes such lovely cards that would be suitable for both male and female and can be used to create thank you, cards, birthday cards, sympathy cards, thinking of you cards or, Father's or Mother's Day cards or for anyone that loves the beach! The Specialty Designer Series Paper is amazing! The bundle, paper, pearls and ribbon will be available for customer orders beginning on January 5th from the January-April 2023 Mini Catalog.

Products available for order from the January-April 2023 Mini Catalog on January 5 are included below. Products that can be purchased now are included on the next page.

- Seaside Bay Stamp Set - Item #160436
- Seaside Bay Dies - Item # 160444
- Seaside Bay Bundle - Item #160445
- By the Bay 6" x 6" Specialty Designer Series Paper - Item #160434
- Flat Adhesive-backed Pearls - Item #160449
- Night of Navy Bordered Ribbon - Item #160581

Stampin' Up! Seaside Bay Thank You Card for Amy's Inkin' Krew Blog Hop

Project Sheet - Dec 13 2022

Carol Buckalew

inkybeestampers@gmail.com

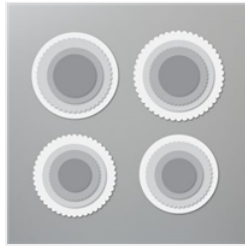
<https://www.inkybeestampers.com>



Gold & Rose Gold 6" X 6" (15.2 X 15.2 Cm) Metallic Specialty Paper - 156844

Price: \$5.00

Add to Cart



Layering Circles Dies - 151770

Price: \$35.00

Add to Cart



Night Of Navy 8-1/2" X 11" Cardstock - 100867

Price: \$9.25

Add to Cart



Coastal Cabana 8-1/2" X 11" Cardstock - 131297

Price: \$9.25

Add to Cart



Mint Macaron 8-1/2" X 11" Cardstock - 138337

Price: \$9.25

Add to Cart



Soft Suede 8-1/2" X 11" Cardstock - 115318

Price: \$9.25

Add to Cart



Petal Pink 8-1/2" X 11" Cardstock - 146985

Price: \$9.25

Add to Cart



Basic White 8-1/2" X 11" Cardstock - 159276

Price: \$10.25

Add to Cart



Basic White Medium Envelopes - 159236

Price: \$7.50

Add to Cart



Soft Suede Classic Stampin' Pad - 147115

Price: \$8.00

Add to Cart



Balmy Blue Classic Stampin' Pad - 147105

Price: \$8.00

Add to Cart



Blending Brushes - 153611

Price: \$12.50

Add to Cart



Mini Glue Dots - 103683

Price: \$5.25

Add to Cart



Stampin' Dimensionals - 104430

Price: \$4.25

Add to Cart



Multipurpose Liquid Glue - 110755

Price: \$4.00

Add to Cart

Stampin' Up! Seaside Bay Thank You Card for Amy's Inkin' Krew Blog Hop

Project Sheet - Dec 13 2022

Carol Buckalew

inkybeestampers@gmail.com

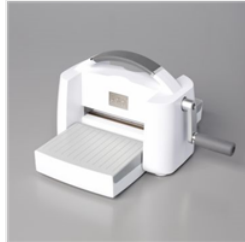
<https://www.inkybeestampers.com>



Paper Trimmer -
152392

Price: \$25.00

Add to Cart



Stampin' Cut &
Emboss Machine -
149653

Price: \$125.00

Add to Cart