

Playing in the Rain Easy Center Step Friendship Card

Project Sheet - Dec 7 2022

Carol Buckalew
inkybeestampers@gmail.com
<https://www.inkybeestampers.com>



Today's card is a sneak peek of the ***Playing in the Rain Stamp Set, Playing in the Rain Dies, and the Rain or Shine 12" x 12" Specialty Designer Series Paper***. The card fold is an Easy Center Step card and just perfect for these adorable images! Let's get started!

1. Card Cuts:

- Card Base - Cut 1 Basic Black cardstock to 8" x 5-1/2", from the long edge, score at 3", 6" and 7"
- Center Step - Cut 1 Basic Black cardstock to 3" x 6", from the long edge, score at 4-1/4"
- DSP Panels (Rain or Shine Specialty Designer Series Paper in the raindrop pattern).
Important Note: The Specialty DSP is directional so make sure the paper is oriented correctly before cutting!
 - Front-Bottom on Card Base - Cut 1 at 5-3/8" x 7/8"
 - Front-Back on Card Base - Cut 2 at 5-3/8" x 2-7/8"
 - Sidestep - Cut 1 at 4-1/8" x 2-7/8"
- Scraps of Balmy Blue cardstock for stamping and die cutting (1) clouds. scraps of

Playing in the Rain Easy Center Step Friendship Card

Project Sheet - Dec 7 2022

Carol Buckalew

inkybeestampers@gmail.com

<https://www.inkybeestampers.com>

Basic White cardstock for stamping and die cutting (2) flowers and scraps of Old Olive cardstock for die cutting (4) grasses

- Sentiment Label - Cut 1 Basic White cardstock to 2-3/8" x 7/8"
- Inside Panel - Cut 1 Basic White cardstock to 5-3/8" x 2-7/8"

2. Fold the card base and use a bone folder to burnish the folds. The 3" score line is a mountain fold, the 6" score line is a valley fold and the 7" score line is a mountain fold. For the Center Step, fold and burnish at the 4-1/4" score line.
3. Adhere the DSP panels to the card base and center step piece. **Do not adhere one of the 5-3/8" x 2-7/8" pieces to the back of the card base yet!**
4. On the inside white panel, stamp the flowers from the Playing in the Rain Stamp Set in Tuxedo Black Memento ink in the lower left corner of the panel. Use Stampin' Blends to color the flowers in So Saffron, color the flower centers in Crumb Cake, and color the leaves in Old Olive. Second generation stamp the rain drops across the top of the panel. Adhere the panel to the inside of the card base.



5. Stamp/Die Cut the following:

Playing in the Rain Easy Center Step Friendship Card

Project Sheet - Dec 7 2022

Carol Buckalew

inkybeestampers@gmail.com

<https://www.inkybeestampers.com>

- Stamp the clouds from the Playing in the Rain Stamp Set in Tuxedo Black Memento ink onto a scrap piece of Balmy Blue cardstock then use a Smoky Slate Stampin' Blend to shade the bottoms of the clouds. Die cut the clouds using the coordinating die from the Playing in the Rain Dies set.
 - Stamp two sets of flowers in Tuxedo Black Memento ink onto a scrap of Basic White cardstock. Color the flowers using Stampin' Blends in So Saffron, Old Olive and Crumb Cake (as in Step #4). Die cut the flowers using the coordinating die from the Playing in the Rain Dies set.
 - From scraps of Old Olive cardstock, die cut 4 grasses.
 - Using the dies from the Playing in the Rain Dies set, die cut one bunny and die cut one closed umbrella from sheets in the Rain or Shine 12" x 12" Specialty Designer Series Paper pack.
6. On the sentiment label, stamp the sentiment "Rainy days are better with you" from the Playing in the Rain Stamp Set in Tuxedo Black Memento ink. Cut banners ends on each short side of the sentiment label.
7. Decorate the Center Step
- Adhere the three clouds to the center step card piece (the large section of the center step)
 - Using Stampin' Dimensionals, adhere the sentiment label towards the bottom of the Center Step and center from left to right.
 - Adhere two of the grasses to the center step - one on the right side and one on the left side and tucked slightly under the sentiment label
 - Adhere the handle of the die cut umbrella to the bunny's outstretched hand using a small dot of glue. Apply Stampin' Dimensionals to the back of the bunny/umbrella and adhere the bunny to the center step - just above the sentiment label.
8. Next, attach the center step to the card base using liquid glue. Adhere the center step to the 1" section of the card base, making sure to only apply glue to the center step where it will make contact with the card base. Center the center step piece on the card base. The bottom of the center step should be flush with the bottom edge of the card base. Note: I found it helpful to hold the closed card base in one hand and the center step piece in my other hand to adhere the pieces together. Then, with the card base still closed, apply glue to the underside of the center step piece and adhere to the back of the card base. Only apply glue to about 1/4" of the underside of the center step piece.
9. Adhere the remaining 5-3/8" x 2-7/8" piece of Specialty Designer Series Paper to the back of the card unit. This piece of DSP covers up where the Center Step tab is adhered to the back of the card.
10. Adhere the remaining die cut grasses to either side of the 1" section of the card base.
11. Holding the card closed, adhere the flower die cut pieces to the card base on either side of the center step.
12. Adhere multiple Loose Daisy Embellishments to the center step and card base using a small

Playing in the Rain Easy Center Step Friendship Card

Project Sheet - Dec 7 2022

Carol Buckalew
inkybeestampers@gmail.com
<https://www.inkybeestampers.com>

dot of glue.



The card is complete! How fun is this little bunny playing in the rain!

The following products will be available for customer orders beginning on January 5 from the January-April 2023 Mini Catalog. The remainder of products used to create this card are included at the end of this document.

Available January 5, 2023 from the new January-April 2023 Mini Catalog:

- Playing in the Rain Bundle (Stamps and Dies) - Item #160551
- Rain or Shine 12" x 12" Specialty Designer Series Paper - Item #160540
- Loose Daisy Embellishments - Item #160555

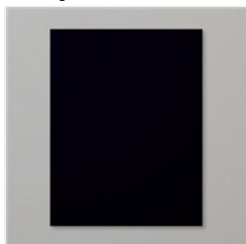
Playing in the Rain Easy Center Step Friendship Card

Project Sheet - Dec 7 2022

Carol Buckalew

inkybeestampers@gmail.com

<https://www.inkybeestampers.com>



Basic Black 8-1/2"
X 11" Cardstock -
121045

Price: \$9.25

Add to Cart



Basic White 8-1/2"
X 11" Cardstock -
159276

Price: \$10.25

Add to Cart



Balmy Blue 8-1/2"
X 11" Cardstock -
146982

Price: \$9.25

Add to Cart



Old Olive 8-1/2" X
11" Cardstock -
100702

Price: \$9.25

Add to Cart



Basic White
Medium Envelopes
- 159236

Price: \$7.50

Add to Cart



Tuxedo Black
Memento Ink Pad -
132708

Price: \$6.00

Add to Cart



Balmy Blue Classic
Stampin' Pad -
147105

Price: \$8.00

Add to Cart



So Saffron
Stampin' Blends
Combo Pack -
154905

Price: \$9.00

Add to Cart



Old Olive Stampin'
Blends Combo
Pack - 154892

Price: \$9.00

Add to Cart



Smoky Slate
Stampin' Blends
Combo Pack -
154904

Price: \$9.00

Add to Cart



Crumb Cake
Stampin' Blends
Combo Pack -
154882

Price: \$9.00

Add to Cart



Multipurpose
Liquid Glue -
110755

Price: \$4.00

Add to Cart



Stampin'
Dimensionals -
104430

Price: \$4.25

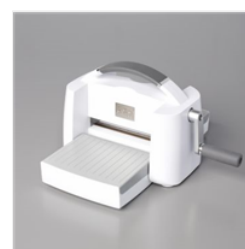
Add to Cart



Paper Trimmer -
152392

Price: \$25.00

Add to Cart



Stampin' Cut &
Emboss Machine -
149653

Price: \$125.00

Add to Cart