

Merriest Moments Pink Poinsettias Christmas Card

Project Sheet - Nov 22 2022

Carol Buckalew

inkybeestampers@gmail.com

<https://www.inkybeestampers.com>



I used the **Merriest Moments Stamp Set**, **Merriest Frames Dies**, **Holly Berry Dies** and the **Basic Borders Dies** to create today's card. How beautiful are these pink poinsettias! These are super easy to create. Let's get started!

1. Card Cuts:

- Card Base - Cut 1 Very Vanilla cardstock to 11" x 4-1/4", score at 5-1/2"
- DSP Panel - Cut 2 to 5-1/4" x 4" (I cut these panels from the Cherry Cobbler polka dot print from the Boughs of Holly 12" x 12" Designer Series Paper)
- Distressed Gold Panel - Cut 1 to 5-1/8" x 3-7/8" **Note: When I created this card, I didn't realize that the Distressed Gold 12" x 12" Specialty Paper isn't in stock right now and won't be back in stock for a few more weeks. Use a coordinating DSP or Gold Foil paper instead!**
- Scraps of Very Vanilla & Mossy Meadow cardstock for stamping and die cutting
- Scraps of Distressed Gold Paper for die cutting. Use Gold Foil paper if you don't have the Distressed Gold Specialty Paper.
- Sentiment Label - Cut 1 Very Vanilla cardstock to 2-7/8" x 2-1/8"

Merriest Moments Pink Poinsettias Christmas Card

Project Sheet - Nov 22 2022

Carol Buckalew

inkybeestampers@gmail.com

<https://www.inkybeestampers.com>

- Inside Panel - Cut 1 Very Vanilla cardstock to 5-1/8" x 3-7/8"
 - Envelope Flap - Cut 1 Distressed Gold Paper or coordinating designer series paper to 6" x 2-1/2"
2. Start by adhering one of the Cherry Cobbler DSP panels to the card front.
 3. From the Distressed Gold Panel measuring 5-1/8" x 3-7/8", measure 2" in on each short edge and make a small pencil mark. Use the V shaped die from the Basic Borders Dies set to die cut. Line up this die on each pencil mark making sure that an equal portion of the die is hanging over each end of the paper panel and secure using Post It tape or Washi tape while die cutting. Adhere the die cut panel to the card front, positioning on the left edge of the card front and leaving an equal reveal around the top, bottom and left edges.
 4. Die cut the following using the Merriest Frames Dies set:
 - Die cut 2 large poinsettias from Very Vanilla cardstock
 - Die cut 2 medium poinsettias from Very Vanilla cardstock
 - Die cut 2 small poinsettias from Very Vanilla cardstock
 - Die cut 2 extra small poinsettias from Very Vanilla cardstock
 5. On the large and medium die cut poinsettias, use the coordinating stamps from the Merriest Moments Stamp Set to third generation stamp the poinsettia images onto these pieces.
Third generation stamping means you will ink up the stamp and stamp twice on a scrap piece of paper before stamping on the die cut poinsettias. Use a blending brush to lightly blend Cherry Cobbler ink over the large, medium, small and extra small poinsettia pieces. Using a small drop of liquid glue, adhere the poinsettia pieces together with the large unit on the bottom, the medium unit next, followed by the small and extra small units to assemble the poinsettia flowers. Be sure to stagger the petals. Allow to dry completely. Once dry, use your fingers to gently curl the petal ends up giving dimension to the flowers. Adhere three gold Festive Pearls to the centers of each of the poinsettia flowers.
 6. On scraps of Mossy Meadow cardstock, stamp two large holly leaves and one medium sized holly leaf in Mossy Meadow ink. Die cut using the coordinating dies from the Merriest Frames Dies set.
 7. From scraps of Distressed Gold Paper, die cut 4 pine boughs using the dies from the Holly Berry Dies set. These can also be cut using Gold Foil paper if you don't have the Distressed Gold paper.
 8. On the sentiment label, stamp the sentiment "A joyful Christmas to you & yours" from the Merriest Moments Stamp Set using Cherry Cobbler ink. **Note: Be sure to stamp the sentiment towards the right side of the sentiment label.** Use the rectangular die from the Merriest Frames Dies set to die cut. Using a blending brush, lightly blend Cherry Cobbler ink around the edges of the sentiment label. Adhere the sentiment label to the card front using Stampin' Dimensionals. Refer to photo for placement.
 9. Using Stampin' Dimensionals, adhere the two poinsettias that you assembled onto the card front - placing them to the left of the sentiment label. Tuck the holly leaves under the poinsettias and adhere with liquid glue. Next, tuck the gold pine boughs under the

Merriest Moments Pink Poinsettias Christmas Card

Project Sheet - Nov 22 2022

Carol Buckalew

inkybeestampers@gmail.com

<https://www.inkybeestampers.com>

poinsettias. Refer to photo for placement.

10. Using gold Simply Elegant Trim, wrap the trim around two fingers held together three times. Secure the ends of the trim using several Mini Glue Dots. Now fold the looped trim in half. Tuck the end of the looped trim under the top poinsettia. Use an additional Mini Glue Dot if necessary.
11. Add an additional gold Festive Pearl to the sentiment label.
12. On the Very Vanilla inside panel, stamp the sentiment "Together is the merriest place to be" from the Merriest Moments Stamp Set using Cherry Cobbler ink. Third generation stamp the greenery image from the Merriest Moments Stamp Set on either side of the sentiment using Cherry Cobbler ink. Adhere the panel to the DSP mat, then adhere this unit to the inside of the card.



13. Adhere the Distressed Gold paper to the envelope flap and trim around the flap. If you do not have Distressed Gold paper, use a coordinating piece of designer series paper.
14. Third generation stamp the greenery image from the Merriest Moments Stamp Set onto the envelope front in Cherry Cobbler ink.

Merriest Moments Pink Poinsettias Christmas Card

Project Sheet - Nov 22 2022

Carol Buckalew

inkybeestampers@gmail.com

<https://www.inkybeestampers.com>



I love mixing red, pink and white poinsettias together when decorating for Christmas...how about you? The lightly blended Cherry Cobbler ink makes the perfect shade of pink for the poinsettias on this card! Give it a try!

Products used to create this card are included on the next page.

Merriest Moments Pink Poinsettias Christmas Card

Project Sheet - Nov 22 2022

Carol Buckalew

inkybeestampers@gmail.com

<https://www.inkybeestampers.com>



Merriest Moments
Photopolymer
Stamp Set
(English) - 156353

Price: \$22.00

Add to Cart



Merriest Frames
Hybrid Embossing
Folder - 156385

Price: \$39.00

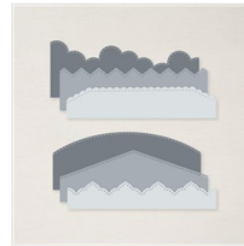
Add to Cart



Holly Berry Dies -
159607

Price: \$35.00

Add to Cart



Basic Borders Dies
- 155558

Price: \$29.00

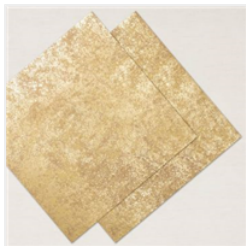
Add to Cart



Boughs Of Holly
12" X 12" (30.5 X
30.5 Cm) Designer
Series Paper -
159600

Price: \$12.00

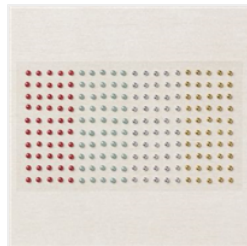
Add to Cart



Distressed Gold
12" X 12" (30.5 X
30.5 Cm) Specialty
Paper - 159237

Price: \$5.00

Add to Cart



Festive Pearls -
159963

Price: \$7.00

Add to Cart



Simply Elegant
Trim - 155766

Price: \$7.50

Add to Cart



Very Vanilla 8-1/2"
X 11" Cardstock -
101650

Price: \$10.25

Add to Cart



Mossy Meadow 8-
1/2" X 11"
Cardstock -
133676

Price: \$9.25

Add to Cart



Very Vanilla
Medium Envelopes
- 107300

Price: \$7.50

Add to Cart



Cherry Cobbler
Classic Stampin'
Pad - 147083

Price: \$8.00

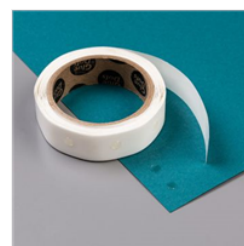
Add to Cart



Mossy Meadow
Classic Stampin'
Pad - 147111

Price: \$8.00

Add to Cart



Mini Glue Dots -
103683

Price: \$5.25

Add to Cart



Stampin'
Dimensionals -
104430

Price: \$4.25

Add to Cart

Merriest Moments Pink Poinsettias Christmas Card

Project Sheet - Nov 22 2022

Carol Buckalew

inkybeestampers@gmail.com

<https://www.inkybeestampers.com>



Multipurpose
Liquid Glue -
110755

Price: \$4.00

Add to Cart



Blending Brushes -
153611

Price: \$12.50

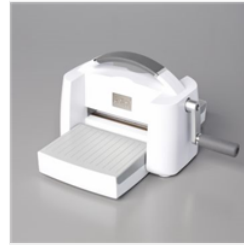
Add to Cart



Paper Trimmer -
152392

Price: \$25.00

Add to Cart



Stampin' Cut &
Emboss Machine -
149653

Price: \$125.00

Add to Cart