

Decorated With Happiness Christmas Card for Amy's Inkin' Krew Blog Hop

Project Sheet - Nov 8 2022

Carol Buckalew
inkybeestampers@gmail.com
<https://www.inkybeestampers.com>



While creating this card I got to play with a few "new to me" products - The Decorated With Happiness Stamp Set, Decorated Pine Dies, and the Snowflake 12" x 12" Specialty Vellum! I used a wide variety of products on this card, but you can certainly adapt the card according to what you have on hand. Let's get started!

Supplies:

- Decorated With Happiness Stamp Set
- Decorated Pine Dies
- Framed Florets Dies
- Stylish Shapes Dies
- Snowflake 12" x 12" Specialty Vellum
- Silver Foil 12" x 12" Specialty Pack
- 2021-2023 In Color 6" x 6" Designer Series Paper
- Real Red & Garden Green Ribbon Combo Pack

Decorated With Happiness Christmas Card for Amy's Inkin' Krew Blog Hop

Project Sheet - Nov 8 2022

Carol Buckalew

inkybeestampers@gmail.com
<https://www.inkybeestampers.com>

- Simply Elegant Trim
- Paper: Thick Basic White, Basic White, Real Red, Evening Evergreen
- Ink: Real Red, Evening Evergreen

1. Card Cuts:

- Card Base - Cut 1 Thick Basic White cardstock to 11" x 4-1/4", score at 5-1/2"
- Vellum Panel - Cut 1 of the Snowflake 12" x 12" Specialty Vellum (Snowflake pattern) to 5-3/8" x 4-1/8"
- Die cut 1 ornate oval frame from the Framed Florets Dies set and cut 1 ornament from the Decorated Pine Dies set in Silver Foil
- Cut 2 large pine sprigs from the Decorated Pine Dies set in Evening Evergreen
- Cut 1 1-1/2" circle from the Stylish Shapes Dies set in Basic White
- Inside Mat - Cut 1 Real Red cardstock to 5-3/8" x 4-1/8"
- Inside Panel - Cut 1 Basic White cardstock to 5-1/4" x 4"
- Envelope Flap - Cut 1 coordinating DSP to 6" x 2-1/2"

2. Start off by adhering the vellum panel to the card front using small dots of glue. Place the glue dots where they will be hidden by the design elements on the vellum.
3. Using scraps of Silver Foil, die cut the ornate oval frame from the Framed Florets Dies set and the ornament from the Decorated Pine Dies. Tip: You can place the ornament die in the center of the ornate oval frame to conserve Silver Foil paper. Adhere the ornate frame to the card front.
4. Using a small length of silver Simply Elegant Trim, loop the trim through the top loop of the die cut ornament, then carefully adhere the ornament to the area in the center of the oval frame. Use two Mini Glue Dots to attach the ends of the Simply Elegant Trim to the top of the oval frame.
5. Adhere a pine sprig to the left and right top of the oval frame. I trimmed these pieces down to fit.
6. Stamp the sentiment "Christmas greetings" from the Decorated with Happiness Stamp Set onto the white die cut circle using Real Red ink. Adhere the circle to the lower right of the card front and overlapping the oval frame. Use Stampin' Dimensionals to adhere. I also added a white die cut star to the top of the sentiment label.
7. Tie a bow using Real Red ribbon and attach to the top of the oval frame using a Mini Glue Dot. I left the tails of the ribbon long and trimmed them even to the left and right of the card front.
8. On the inside panel, use the large pine bough stamp and stamp the image across the top left of the panel in Evening Evergreen ink. Stamp the sentiment "Wishing you a season decorated with happiness and wonder" in Real Red ink under and slightly to the right of the stamped pine bough. Adhere the panel to its Real Red mat, then adhere this unit to the inside of the card.

Decorated With Happiness Christmas Card for Amy's Inkin' Krew Blog Hop

Project Sheet - Nov 8 2022

Carol Buckalew
inkybeestampers@gmail.com
<https://www.inkybeestampers.com>



9. Stamp the same pine bough image onto the lower left of the envelope front in Evening Evergreen ink.
10. Adhere a piece of Evening Evergreen 2021-2023 In Color designer series Paper to the envelope flap and trim around the flap to finish off the envelope.

Decorated With Happiness Christmas Card for Amy's Inkin' Krew Blog Hop

Project Sheet - Nov 8 2022

Carol Buckalew
inkybeestampers@gmail.com
<https://www.inkybeestampers.com>



I just love the Snowflake Specialty Vellum and all of the silver accents on this card along with a bit of Real Red! It makes a very festive holiday card!

Products used to create this card are included on the next page.

Decorated With Happiness Christmas Card for Amy's Ink'n' Krew Blog Hop

Project Sheet - Nov 8 2022

Carol Buckalew

inkybeestampers@gmail.com
<https://www.inkybeestampers.com>



Decorated With
Happiness Bundle
(English) - 159711

Price: \$51.25

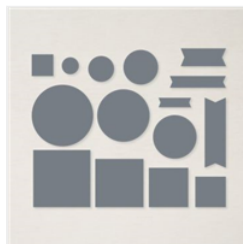
Add to Cart



Framed Florets
Dies - 160623

Price: \$37.00

Add to Cart



Stylish Shapes
Dies - 159183

Price: \$30.00

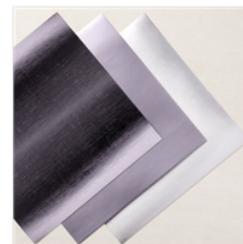
Add to Cart



Snowflake 12 X 12
(30.5 X 30.5 Cm)
Specialty Vellum -
159832

Price: \$10.00

Add to Cart



Silver Foil 12" X
12" (30.5 X 30.5
Cm) Specialty
Pack - 156457

Price: \$10.00

Add to Cart



2021-2023 In
Color™ 6" X 6"
(15.2 X 15.2 Cm)
Designer Series
Paper - 159254

Price: \$12.00

Add to Cart



Real Red &
Garden Green 3/8"
(1 Cm) Ribbon
Combo Pack -
159577

Price: \$7.50

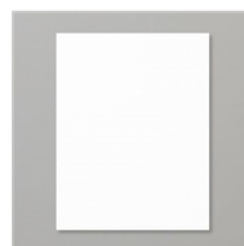
Add to Cart



Simply Elegant
Trim - 155766

Price: \$7.50

Add to Cart



Basic White 8-1/2"
X 11" Thick
Cardstock -
159229

Price: \$8.75

Add to Cart



Basic White 8-1/2"
X 11" Cardstock -
159276

Price: \$10.25

Add to Cart

Decorated With Happiness Christmas Card for Amy's Inkin' Krew Blog Hop

Project Sheet - Nov 8 2022

Carol Buckalew

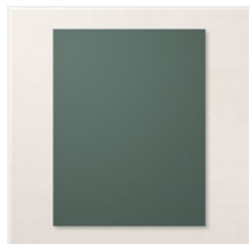
inkybeestampers@gmail.com
<https://www.inkybeestampers.com>



Real Red 8-1/2" X
11" Cardstock -
102482

Price: \$9.25

[Add to Cart](#)



Evening Evergreen
8-1/2" X 11"
Cardstock -
155574

Price: \$9.25

[Add to Cart](#)



Basic White
Medium Envelopes
- 159236

Price: \$7.50

[Add to Cart](#)



Real Red Classic
Stampin' Pad -
147084

Price: \$8.00

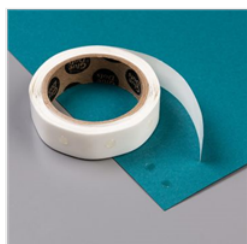
[Add to Cart](#)



Evening Evergreen
Classic Stampin'
Pad - 155576

Price: \$8.00

[Add to Cart](#)



Mini Glue Dots -
103683

Price: \$5.25

[Add to Cart](#)



Stampin'
Dimensionals -
104430

Price: \$4.25

[Add to Cart](#)



Multipurpose
Liquid Glue -
110755

Price: \$4.00

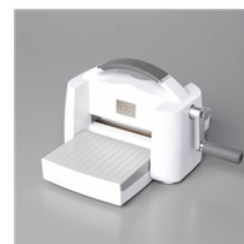
[Add to Cart](#)



Paper Trimmer -
152392

Price: \$25.00

[Add to Cart](#)



Stampin' Cut &
Emboss Machine -
149653

Price: \$125.00

[Add to Cart](#)