

Window Wishes Thanksgiving Card

Project Sheet - Sept 6 2022

Carol Buckalew

inkybeestampers@gmail.com

<https://www.inkybeestampers.com>



I used the Window Wishes Stamp Set, Window Dies, and Painted Pheasant Stamp Set to create today's card. I love how this one turned out! Reminds me of a chilly Thanksgiving Day and a warm cozy house full of good smells!

1. Card Cuts:

- Card Base - Cut 1 Very Vanilla cardstock to 8-1/2" x 5-1/2", score at 4-1/4"
- Mat - Cut 1 Crushed Curry cardstock to 5-3/8" x 4-1/8"
- Panel - Cut 1 Cajun Craze cardstock to 5-1/4" x 4"
- Scraps of Basic White cardstock to stamping and die cutting wreath, candles, flames, and window components
- Scrap of Early Espresso for die cutting bow
- Inside Mat - Cut 1 Cajun Craze cardstock to 5-3/8" x 4-1/8"
- Inside Panel - Cut 1 Very Vanilla cardstock to 5-1/4" x 4"

2. Start by using the Brick & Mortar 3D Embossing Folder to emboss the Cajun Craze panel. Adhere the embossed panel to its Crushed Curry mat.

3. Wrap a length of Satin Edged Ribbon around the bottom portion of the panel from Step #2 above. Position the ribbon approximately 1-1/4" to 1-1/2" from the bottom of the panel and

Window Wishes Thanksgiving Card

Project Sheet - Sept 6 2022

Carol Buckalew

inkybeestampers@gmail.com

<https://www.inkybeestampers.com>

secure the ends of the ribbon on the back of the panel using Tear & Tape. Adhere the panel to the card front.

4. Using white cardstock, die cut the window and window insert using the window die. Now die cut the window frame, but using the window die, and the window frame die together.
5. From the Window Wishes Stamp Set, stamp the following:
 - Wreath - Cajun Craze
 - Candles - Soft Succulent
 - Candle Flames - Crushed Curry
6. Using the coordinating dies from the Window Dies set, die cut the above from Step #5, plus die cut a bow from Early Espresso cardstock.
7. On the window insert, use a blending brush to blend Daffodil Delight ink across the insert. Concentrate the ink towards the center of the insert (think about where the candle flames will be).
8. Lay the window and window insert face down and use Stampin' Dimensionals to hold the two pieces together. Adhere the window unit to the card front, slightly overlapping the ribbon.
9. Adhere the window frame to the window insert. Adhere the candle flames to the candles, and adhere the bow to the wreath. Adhere the candles on the window sill and adhere the wreath at the top of the window.
10. On a scrap piece of Crushed Curry cardstock, cut to approximately 4" x 3/4". Stamp the sentiment "Happy Thanksgiving" from the Painted Pheasant Stamp Set in Cajun Craze ink. Using the oak leaf stamp from the same stamp set, stamp several leaves on each side of the sentiment using Crushed Curry ink. Cut the right side of the sentiment label at an angle. Adhere the sentiment label below the window unit using Stampin' Dimensionals.
11. Using a Textural Element, color the element using a Cajun Craze Stampin' Blend then adhere the element to the left side of the card and slightly overlapping the bottom of the window and the sentiment label.
12. On the inside panel, use a piece of Washi tape, Post It tape or Post It notes to mask off about a 1/2" of the panel on the right. Using the same oak leaf as above, stamp oak leaves on the 1/2" strip from top to bottom using Crushed Curry ink. Carefully remove the mask. Using the sentiment "Grateful" from the Painted Pheasant Stamp Set, stamp the sentiment in Cajun Craze ink. Adhere the inside panel to its Cajun Craze mat, then adhere this unit to the inside of the card.
13. Stamp oak leaves on the envelope front and envelope flap.

Window Wishes Thanksgiving Card

Project Sheet - Sept 6 2022

Carol Buckalew

inkybeestampers@gmail.com

<https://www.inkybeestampers.com>



The card is complete! I had so much fun creating this card! I love all of the rich, warm colors...I'm ready for a turkey dinner! How about you?

Products used to create this card are included on the next page.

Window Wishes Thanksgiving Card

Project Sheet - Sept 6 2022

Carol Buckalew

inkybeestampers@gmail.com

<https://www.inkybeestampers.com>



Window Wishes
Bundle (English) -
159757

Price: \$50.25

Add to Cart



Painted Pheasant
Cling Stamp Set
(English) - 159846

Price: \$19.00

Add to Cart



Brick & Mortar 3D
Embossing Folder
- 149643

Price: \$10.00

Add to Cart



Textural Elements
- 159966

Price: \$8.00

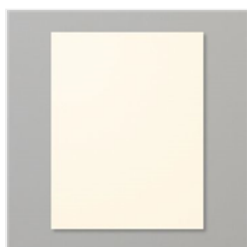
Add to Cart



Gold & Vanilla 3/8"
(1 Cm) Satin
Edged Ribbon -
159555

Price: \$8.00

Add to Cart



Very Vanilla 8-1/2"
X 11" Cardstock -
101650

Price: \$10.25

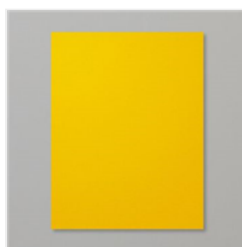
Add to Cart



Cajun Craze 8-1/2"
X 11" Cardstock -
119684

Price: \$9.25

Add to Cart



Crushed Curry 8-
1/2" X 11"
Cardstock -
131199

Price: \$9.25

Add to Cart



Very Vanilla
Medium Envelopes
- 107300

Price: \$7.50

Add to Cart



Cajun Craze
Classic Stampin'
Pad - 147085

Price: \$8.00

Add to Cart



Crushed Curry
Classic Stampin'
Pad - 147087

Price: \$8.00

Add to Cart



Daffodil Delight
Classic Stampin'
Pad - 147094

Price: \$8.00

Add to Cart



Soft Succulent
Classic Stampin'
Pad - 155778

Price: \$8.00

Add to Cart



Cajun Craze
Stampin' Blends
Combo Pack -
154879

Price: \$9.00

Add to Cart



Blending Brushes -
153611

Price: \$12.50

Add to Cart

Window Wishes Thanksgiving Card

Project Sheet - Sept 6 2022

Carol Buckalew

inkybeestampers@gmail.com

<https://www.inkybeestampers.com>



Tear & Tape
Adhesive - 154031

Price: \$7.00

Add to Cart



Stampin'
Dimensionals -
104430

Price: \$4.25

Add to Cart



Multipurpose
Liquid Glue -
110755

Price: \$4.00

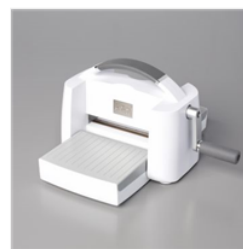
Add to Cart



Paper Trimmer -
152392

Price: \$25.00

Add to Cart



Stampin' Cut &
Emboss Machine -
149653

Price: \$125.00

Add to Cart