

Hello Harvest Flip Flap Friendship Card

Project Sheet - Sept 28 2022

Carol Buckalew

inkybeestampers@gmail.com

<https://www.inkybeestampers.com>

Carol Buckalew
Images © Stampin' Up!
InkyBeeStampers.com



Flip Flap cards are great for showing off beautiful designer series paper and die cut images! I used the **Hello Harvest Stamp Set**, **Rustic Pumpkin Dies**, **Gingham Cottage 12" x 12" Designer Series Paper** and the **Rustic Harvest 12" x 12" Designer Series Paper** to create this fun fold card in rich Fall tones. Let's get started!

1. Card Cuts:

- Card Base #1 - Cut 1 Early Espresso cardstock to 4-1/4" x 11", score at 5-1/2", then trim 2-3/4" from the front.
- Card Base #2 - Cut 1 Early Espresso cardstock to 3-1/2" x 10", score at 5"
- Inside Panel for Card Base #2 - Cut 1 Very Vanilla cardstock to 4-7/8" x 3-3/8"
- Rustic Harvest DSP Panels (green with white swirls pattern)
 - Cut 1 4-1/8" x 2-5/8"
 - Cut 1 to 5-3/8" x 4-1/8"
- Gingham Cottage DSP Panels (Pumpkin Pie small gingham print)
 - Cut 2 to 4-7/8" x 3-3/8"
 - Cut 1 to 4-1/8" x 2-5/8"

Hello Harvest Flip Flap Friendship Card

Project Sheet - Sept 28 2022

Carol Buckalew

inkybeestampers@gmail.com

<https://www.inkybeestampers.com>

- Use scraps of Very Vanilla cardstock to Die Cut Pumpkins
 - Cut 1 large embossed pumpkin
 - Cut 1 small (skinny) embossed pumpkin
 - Use scraps of Mossy Meadow to Die Cut Pumpkin Stems and Vines
 - Cut 2 Pumpkin Stems
 - Cut 2 Pumpkin Vines
 - Scraps of DSP for die cutting leaves
 - From Rustic Harvest DSP (green with white swirl pattern) - Cut 4 leaves using the leaf dies from the Rustic Pumpkin Dies set
 - From Gingham Cottage DSP (Pumpkin Pie gingham pattern) - Cut 1 leaf using the die from the Rustic Pumpkin Dies set
 - Envelope Flap - Cut 1 Gingham Cottage DSP to 6" x 2-1/2"
2. Taking the two die cut Very Vanilla pumpkins, use a blending brush to lightly blend Early Espresso ink onto the pumpkins, concentrating on the embossed areas of the pumpkins.
 3. Assemble the pumpkins by gluing the stems onto the back tops of the pumpkins, and adhering the vines to the pumpkins. Set aside for now.
 4. Using stamps from the Hello Harvest Stamp Set, on one of the Gingham Cottage Pumpkin Pie panels measuring 4-7/8" x 3-3/8", stamp the sentiment "Hello" in Early Espresso ink to the lower right of the panel. Using the leaf image from the stamp set, ink the leaf with Early Espresso ink then stamp off onto a scrap piece of paper, then second-generation stamp the leaf over the "Hello" sentiment you just stamped. On the lower left side of this panel, stamp two leaves with one pointing to the right and one pointing to the left. You can use the large pumpkin to determine where you will stamp these leaves.
 5. Keeping in mind that Card Base #2 (the smaller card base) has it's spine on the right, adhere the stamped panel from Step #4 above to the front of Card Base #2.
 6. Adhere the remaining DSP panels to the card bases.
 - Open Card Base #2 fully and adhere the second 4-7/8" x 3-3/8" Gingham Cottage DSP panel to the right side of the opened card base
 - The spine for Card Base #1 is on the left. Open Card Base #1 fully and adhere the smaller Gingham Cottage DSP panel to the left side of the opened card base and adhere the large Rustic Harvest DSP panel to the right side of the opened card base. Close Card Base #1 and adhere the smaller Rustic Harvest DSP panel to the front of the closed card base.
 7. Using the stamps from the Hello Harvest Stamp Set, on the Very Vanilla panel, stamp the sentiment "You are such a Blessing" in Early Espresso ink. Stamp the leaf image in the lower right corner of this panel in Early Espresso ink, then immediately stamp again to the right of this leaf. Second-generation stamp the leaf one more time in Early Espresso ink in this corner. Adhere this panel to the inside of Card Base #2.
 8. Fully open Card Base #1. You will be adhering Card Base #2 to the large panel of Card Base #1. With Card Base #2 closed and with the spine on the right, apply glue to the back of

Hello Harvest Flip Flap Friendship Card

Project Sheet - Sept 28 2022

Carol Buckalew

inkybeestampers@gmail.com

<https://www.inkybeestampers.com>

- Card Base #2 then adhere it to the inside of Card Base #1 (spine on left). Make sure to center Card Base #2 from top to bottom and right to left.
9. Open both card bases. Adhere the three DSP leaves cut from the Rustic Harvest DSP on the right panel (this panel is to the right of the sentiment panel on Card Base #2. On the left panel (inside of Card Base #1 and to the left of the inside sentiment panel) adhere the small, skinny pumpkin to the panel. Adhere one of the Rustic Harvest die cut leaves over the bottom of the pumpkin.
 10. Close the left panel of Card Base #1. Adhere the leaf die cut from the Gingham Cottage DSP to the front of the Rustic Harvest DSP panel.
 11. Close the right panel of Card Base #2. Adhere the large die cut pumpkin to the front panel of Card Base #2, over top of the two stamped leaves.
 12. Tie a small bow using Early Espresso Faux Suede Ribbon and adhere to the top of the pumpkin.
 13. On the envelope, stamp the leaf in Early Espresso ink on the lower right front of the envelope, then immediately stamp again to the right of the left you just stamped. Reink the stamp and stamp off on a scrap piece of paper, then second-generation stamp the leaf to the left of the leaf group on the envelope front.
 14. Adhere the coordinating DSP to the envelope flap and fussy cut around the flap to finish off the envelope.
 15. Adhere three copper Brushed Metallic Adhesive-Backed Dots to the card front.



Hello Harvest Flip Flap Friendship Card

Project Sheet - Sept 28 2022

Carol Buckalew

inkybeestampers@gmail.com
<https://www.inkybeestampers.com>



The card is complete. I love the flip flap cards. There is a surprise waiting every time you open a flap giving you lots of decorating possibilities!

Products used to create this card are included on the next page.

Hello Harvest Flip Flap Friendship Card

Project Sheet - Sept 28 2022

Carol Buckalew

inkybeestampers@gmail.com

<https://www.inkybeestampers.com>



Hello Harvest
Bundle (English) -
159644

Price: \$49.50

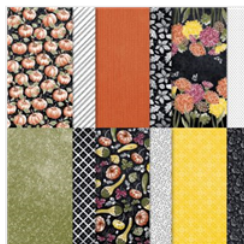
Add to Cart



Gingham Cottage
12" X 12" (30,5 X
30,5 Cm) Designer
Series Paper -
159651

Price: \$30.00

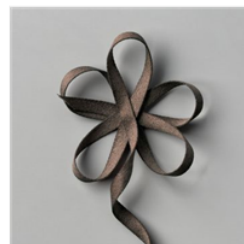
Add to Cart



Rustic Harvest 12"
X 12" (30.5 X 30.5
Cm) Designer
Series Paper -
159633

Price: \$12.00

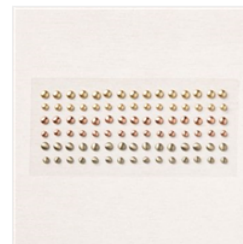
Add to Cart



Early Espresso
1/4" (6.4 Mm) Faux
Suede Trim -
152472

Price: \$6.50

Add to Cart



Brushed Metallic
Adhesive Backed
Dots - 156506

Price: \$9.00

Add to Cart



Very Vanilla 8-1/2"
X 11" Cardstock -
101650

Price: \$10.25

Add to Cart



Early Espresso 8-
1/2" X 11"
Cardstock -
119686

Price: \$9.25

Add to Cart



Mossy Meadow 8-
1/2" X 11"
Cardstock -
133676

Price: \$9.25

Add to Cart



Very Vanilla
Medium Envelopes
- 107300

Price: \$7.50

Add to Cart



Early Espresso
Classic Stampin'
Pad - 147114

Price: \$8.00

Add to Cart



Stampin'
Dimensionals -
104430

Price: \$4.25

Add to Cart



Multipurpose
Liquid Glue -
110755

Price: \$4.00

Add to Cart



Paper Trimmer -
152392

Price: \$25.00

Add to Cart



Stampin' Cut &
Emboss Machine -
149653

Price: \$125.00

Add to Cart