

Stampin' Up! Christmas Lights Holiday Card for the Happy Inkin' Thursday Blog Hop

Project Sheet - Sept 29 2022

Carol Buckalew
inkybeestampers@gmail.com
<https://www.inkybeestampers.com>



I created this card for the Happy Inkin' Thursday Blog Hop using the **Christmas Lights Stamp Set**, **Twinkling Lights Dies** and the **Wintry 3D Embossing Folder**. Sentiments are from the **Brightest Glow Stamp Set** (one of new favorites for holiday sentiments). For this week's Blog Hop we have a sketch challenge. On with the card.

1. Card Cuts:

- Card Base - Cut 1 Soft Sea Foam cardstock to 8-1/2" x 5-1/2", score at 4-1/4"
- Panel - Cut 1 Basic White cardstock to 4-1/2" x 3-1/4" for embossing and die cutting
- Christmas Tree - Cut 1 Mint Macaron to 4-1/4" x 2-1/2"
- Silver Stars - Cut 1 Silver Foil 12" x 12" Specialty Paper to approximately 2" x 2"
- Sentiment Label - Cut 1 Basic White cardstock to 2-1/2" x 1-1/8"
- Inside Mat - Cut 1 Mint Macaron cardstock to 5" x 3-3/4"
- Inside Panel - Cut 1 Basic White cardstock to 4-3/4" x 3-1/2"

2. Start by die cutting the 4-1/2" x 3-1/4" white panel using the 3rd from the largest die from the

Stampin' Up! Christmas Lights Holiday Card for the Happy Inkin' Thursday Blog Hop

Project Sheet - Sept 29 2022

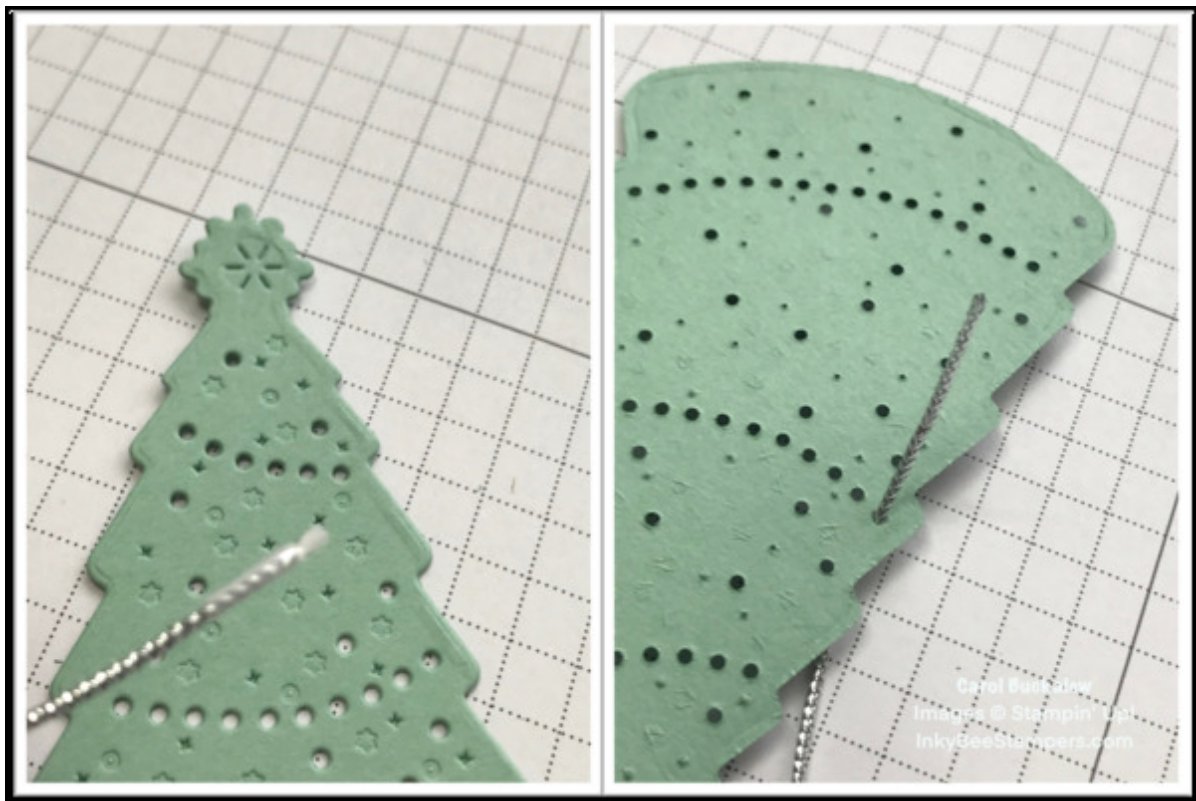
Carol Buckalew

inkybeestampers@gmail.com

<https://www.inkybeestampers.com>

Deckled Rectangles Dies set. Once this panel is die cut, run the panel through the Stampin' Cut & Emboss machine again using the snowflakes embossing folder from the Wintry 3D Embossing Folders set. This die cut and embossed panel is then adhered to the card front using liquid glue. Center the panel on the card front from top to bottom and left to right.

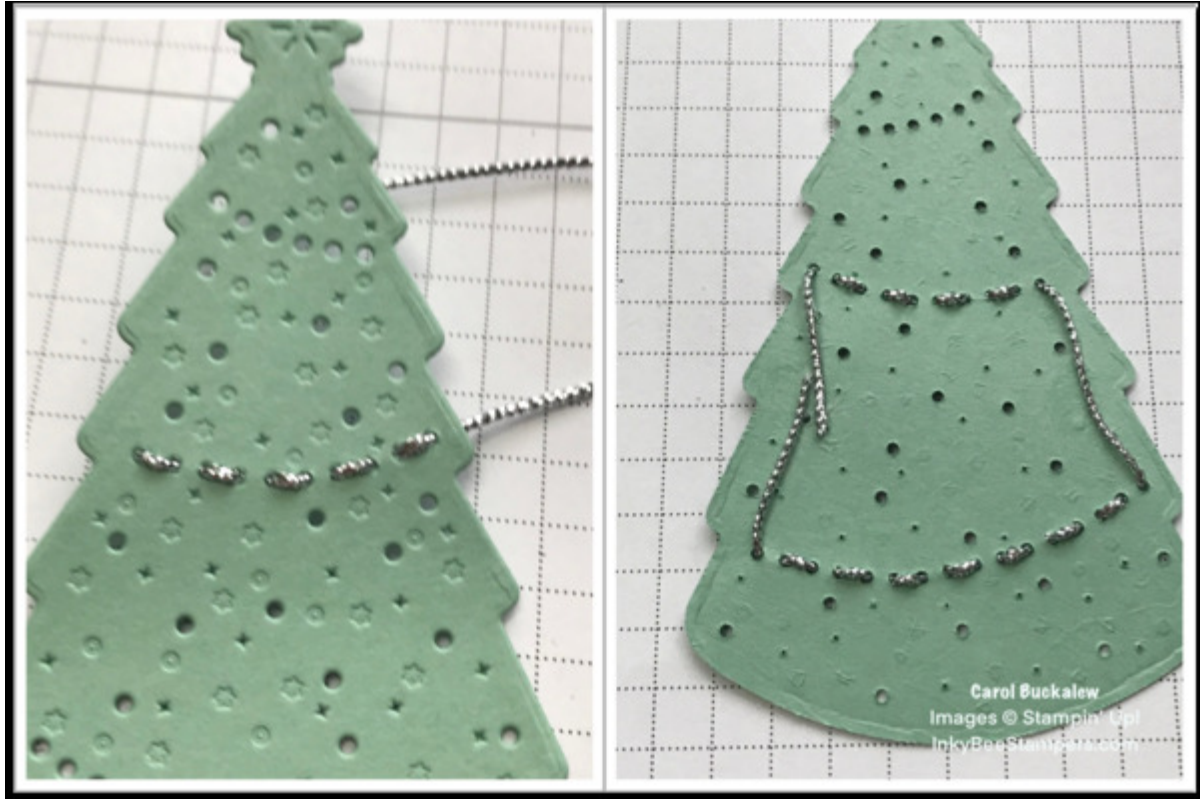
3. Using Mint Macaron cardstock, die cut the Christmas Tree from the Twinkling Lights Dies set. Place the detailed Christmas tree die inside of the outline Christmas tree die and die cut.
4. Cut approximately 12" of Simply Elegant Trim in silver. On one end of the trim, fold a small piece of scotch tape over the end, then trim on each side of the scotch tape. You will be weaving the trim through the cut outs on the die cut Christmas Tree. The scotch tape helps to keep the trim end from fraying. There are three sections of cut outs on the die cut Christmas tree that look like strings of lights or strings of decorations. The top and smallest section will be hidden by the sentiment label, but the middle and bottom sections will be decorated with the Simply Elegant Trim. Start by threading the trim from the back to the front, leaving approximately 3/4" of the trim on the back. Weave the trim in and out of the first section. Without cutting the trim, move to the bottom section and weave the trim in and out of this section of holes. Use a small amount of Tear & Tape or Stampin' Seal to secure the trim ends on the back side of the Christmas tree. Refer to photos below.



Stampin' Up! Christmas Lights Holiday Card for the Happy Inkin' Thursday Blog Hop

Project Sheet - Sept 29 2022

Carol Buckalew
inkybeestampers@gmail.com
<https://www.inkybeestampers.com>



5. From the Twinkling Lights Die set, die cut the following from Silver Foil 12" x 12" Specialty Pack paper:
 - Die cut 1 elongated star (for tree top)
 - Die cut the 3-stars die 2 times (the die cuts 3 small stars at a time...die cut 2 times for a total of 6 stars)
6. Arrange the small silver stars on the Christmas tree so they are equally distributed then adhere the stars to the tree with a small amount of glue. Adhere the elongated star to the top of the tree using a small drop of glue. Using Stampin' Dimensionals, adhere the tree to the embossed white panel on the card front.
7. From the Brightest Glow Stamp Set, stamp the sentiment "joy" in Mint Macaron ink onto a scrap piece of white cardstock, then die cut using the smallest die from the Deckled Rectangles Die set. Use Stampin' Dimensionals on the back right side of the sentiment label and small drops of glue on the back left side of the sentiment label (where it will meet with the Christmas tree) and adhere the sentiment label to the card front making sure the right side of the sentiment label sits between the embossed right edge and the right edge of the card front (refer to photo at the top of the page).
8. Tie a double bow using silver Simply Elegant Trim and adhere the bow to the left side of the sentiment label using a Mini Glue Dot. Adhere the bow at an angle.
9. Adhere several green Festive Pearls to the Christmas tree.

Stampin' Up! Christmas Lights Holiday Card for the Happy Inkin' Thursday Blog Hop

Project Sheet - Sept 29 2022

Carol Buckalew
inkybeestampers@gmail.com
<https://www.inkybeestampers.com>

10. On the inside white panel, stamp the sentiment "to you and yours this Christmas" from the Brightest Glow Stamp Set in Mint Macaron ink. Using Soft Sea Foam ink, stamp the small snowflake from the Christmas Lights Stamp Set around the bottom of the panel and slightly up the left side. Adhere the panel to its Mint Macaron mat, then adhere this unit to the inside of the card.



11. To finish up the card, stamp the same small snowflake in Soft Sea Foam ink on the bottom of the envelope front and the envelope flap.

The Soft Sea Foam card base, snowflakes and the Mint Macaron Christmas tree with its silver embellishments make for a very soft, dreamy looking card. I hope you like it!

Products used to create this card are included on the next page.

Stampin' Up! Christmas Lights Holiday Card for the Happy Inkin' Thursday Blog Hop

Project Sheet - Sept 29 2022

Carol Buckalew

inkybeestampers@gmail.com
<https://www.inkybeestampers.com>



Christmas Lights
Bundle (English) -
159961

Price: \$45.75

Add to Cart



Brightest Glow
Cling Stamp Set
(English) - 159542

Price: \$25.00

Add to Cart



Deckled
Rectangles Dies -
159173

Price: \$30.00

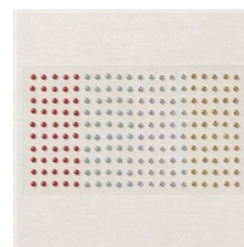
Add to Cart



Wintry 3D
Embossing Folders
- 155433

Price: \$10.00

Add to Cart



Festive Pearls -
159963

Price: \$7.00

Add to Cart



Simply Elegant
Trim - 155766

Price: \$7.50

Add to Cart



Silver Foil 12" X
12" (30.5 X 30.5
Cm) Specialty
Pack - 156457

Price: \$10.00

Add to Cart



Mint Macaron 8-
1/2" X 11"
Cardstock -
138337

Price: \$9.25

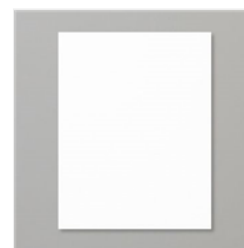
Add to Cart



Soft Sea Foam 8-
1/2" X 11"
Cardstock -
146988

Price: \$9.25

Add to Cart



Basic White 8-1/2"
X 11" Cardstock -
159276

Price: \$10.25

Add to Cart



Basic White
Medium Envelopes
- 159236

Price: \$7.50

Add to Cart



Mint Macaron
Classic Stampin'
Pad - 147106

Price: \$8.00

Add to Cart



Soft Sea Foam
Classic Stampin'
Pad - 147102

Price: \$8.00

Add to Cart



Multipurpose
Liquid Glue -
110755

Price: \$4.00

Add to Cart



Stampin' Seal -
152813

Price: \$8.00

Add to Cart

Stampin' Up! Christmas Lights Holiday Card for the Happy Inkin' Thursday Blog Hop

Project Sheet - Sept 29 2022

Carol Buckalew

inkybeestampers@gmail.com
<https://www.inkybeestampers.com>



Stampin'
Dimensionals -
104430

Price: \$4.25

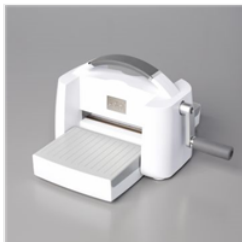
Add to Cart



Paper Trimmer -
152392

Price: \$25.00

Add to Cart



Stampin' Cut &
Emboss Machine -
149653

Price: \$125.00

Add to Cart