

Grassy Grove Encouragement Card

Project Sheet - Aug 17 2022

Carol Buckalew

inkybeestampers@gmail.com

<https://www.inkybeestampers.com>



How about a Grassy Grove in the Fall! This is the third card I've created using the Grassy Grove Stamp Set and Grove Dies...I just love this set and have challenged myself to create a card for each season using this set. And did I mention that this set is a lot of fun to play with? It is and you should put this set on your shopping list! On with the card...

1. Card Cuts:

- Card Base - Cut 1 Crushed Curry cardstock to 8-1/2" x 5-1/2", score at 4-1/4"
- Mat - Cut 1 Mossy Meadow cardstock to 5-3/8" x 4-1/8"
- Panel #1 - Cut 1 Basic White cardstock to 5-1/4" x 4"
- Panel #2 (Background Panel) - Cut 1 Basic White cardstock to 5-1/8" x 3-7/8"
- Sentiment Label - Cut 1 Crushed Curry to 2-1/4" x 1-1/2"
- Mat for Sentiment Label - Cut 1 Mossy Meadow to 2-3/8" x 1-5/8"
- Scraps of Crushed Curry, Mossy Meadow and Granny Apple Green for die cutting greenery sprigs
- Inside Mat - Cut 1 Mossy Meadow cardstock to 5-3/8" x 4-1/8"
- Inside Panel - Cut 1 Basic White cardstock to 5-1/4" x 4"

2. Start by preparing the Background Panel "sky". Using blending brushes, blend in Balmy

Grassy Grove Encouragement Card

Project Sheet - Aug 17 2022

Carol Buckalew

inkybeestampers@gmail.com

<https://www.inkybeestampers.com>

Blue ink towards the bottom 1/3 of the panel, then with a different blending brush, blend in Gorgeous Grape. Using Mossy Meadow ink, stamp pine trees, varying the height of each set stamped, across the bottom of the panel. Set the panel aside for now.

3. Die cut the large tree frame from the Grove Dies, centering the die on the panel.
 - First, using blending brushes, blend Daffodil Delight ink across the entire die cut frame...even the trees.
 - Using separate blending brushes, blend in some Crushed Curry ink in spots in the tree canopy, and also Mossy Meadow ink in spots in the tree canopy.
 - Using a Cajun Craze Stampin' Blend marker, Dot in this darker shade onto the leaves around the center of the frame, then use a Daffodil Delight Stampin' Blend to somewhat blend in the Cajun Craze, but do not completely blend. Adding this darker shade helps the eye to establish shadow and leaves.
 - Using the Crumb Cake Stampin' Blends, color in the tree trunks.
4. Using Stampin' Dimensionals, adhere the colored tree frame to the Background Panel. You will need to trim some of the Stampin' Dimensionals down in order to add support to the tree trunks and sides of the tree frame.
5. Using liquid glue, adhere the tree frame/background panel to the Mossy Meadow mat, then adhere this unit to the card front.
6. Using the "hill" die from the Grassy Grove Stamp Set, ink up this stamp using sponge daubers. Use Mossy Meadow ink for the bottom, Gorgeous Grape towards the middle of the stamp, and Crushed Curry ink for the top of the stamp. Stamp the image and die cut using the coordinating die from the Groves Dies. Use Stampin' Dimensionals to adhere the hill to the bottom of the card front. Place Stampin' Dimensionals towards the bottom of the hill as you will be tucking in some greenery in the next step.
7. Using the two greenery dies from the Groves Dies set, die cut a set of sprigs in Mossy Meadow, Crushed Curry and Granny Apple Green. Using a small drop of glue on the stems, place two sprigs each on the right and left of the hill, tucking the stems under the hill. Adhere an additional sprig towards the center right.
8. Stamp the sentiment "Hope anchors the soul" in Mossy Meadow ink onto the Crushed Curry sentiment label. Adhere the sentiment to its Mossy Meadow mat. Adhere the sentiment label to the card front, placing in the upper left hand corner.
9. Adhere the remaining die cut sprig (one of the short ones) to the top left of the sentiment label, then tie a double bow from linen thread and adhere to the sentiment label using a Mini Glue Dot.
10. For the inside panel, stamp several pine trees in Mossy Meadow ink in the lower right corner. Adhere this panel to its Mossy Meadow mat, then adhere this unit to the inside of the card.
11. Stamp the same pine trees in Mossy Meadow ink on the envelope front and envelope flap.

Grassy Grove Encouragement Card

Project Sheet - Aug 17 2022

Carol Buckalew

inkybeestampers@gmail.com

<https://www.inkybeestampers.com>



The card is complete! I just love the dimension that this set provides!

Products used to create this card are included on the next page.

Grassy Grove Encouragement Card

Project Sheet - Aug 17 2022

Carol Buckalew

inkybeestampers@gmail.com

<https://www.inkybeestampers.com>



Grassy Grove
Cling Stamp Set
(English) - 157836

Price: \$24.00

Add to Cart



Grove Dies -
157844

Price: \$39.00

Add to Cart



Hope & Prayer
Cling Stamp Set
(English) - 159009

Price: \$19.00

Add to Cart



Linen Thread -
104199

Price: \$5.00

Add to Cart



Sponge Daubers -
133773

Price: \$5.00

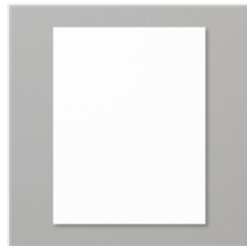
Add to Cart



Blending Brushes -
153611

Price: \$12.50

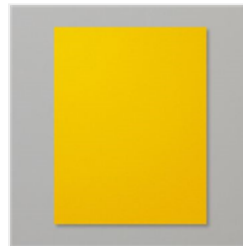
Add to Cart



Basic White 8-1/2"
X 11" Cardstock -
159276

Price: \$10.25

Add to Cart



Crushed Curry 8-
1/2" X 11"
Cardstock -
131199

Price: \$9.25

Add to Cart



Granny Apple
Green 8-1/2" X 11"
Cardstock -
146990

Price: \$9.25

Add to Cart



Mossy Meadow 8-
1/2" X 11"
Cardstock -
133676

Price: \$9.25

Add to Cart



Basic White
Medium Envelopes
- 159236

Price: \$7.50

Add to Cart



Mossy Meadow
Classic Stampin'
Pad - 147111

Price: \$8.00

Add to Cart



Gorgeous Grape
Classic Stampin'
Pad - 147099

Price: \$8.00

Add to Cart



Daffodil Delight
Classic Stampin'
Pad - 147094

Price: \$8.00

Add to Cart



Balmy Blue Classic
Stampin' Pad -
147105

Price: \$8.00

Add to Cart

Grassy Grove Encouragement Card

Project Sheet - Aug 17 2022

Carol Buckalew

inkybeestampers@gmail.com

<https://www.inkybeestampers.com>



Crushed Curry
Classic Stampin'
Pad - 147087

Price: \$8.00

Add to Cart



Daffodil Delight
Stampin' Blends
Combo Pack -
154883

Price: \$9.00

Add to Cart



Crumb Cake
Stampin' Blends
Combo Pack -
154882

Price: \$9.00

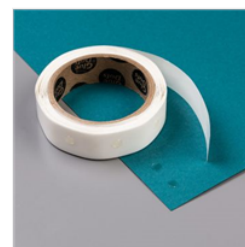
Add to Cart



Cajun Craze
Stampin' Blends
Combo Pack -
154879

Price: \$9.00

Add to Cart



Mini Glue Dots -
103683

Price: \$5.25

Add to Cart



Stampin'
Dimensionals -
104430

Price: \$4.25

Add to Cart



Multipurpose
Liquid Glue -
110755

Price: \$4.00

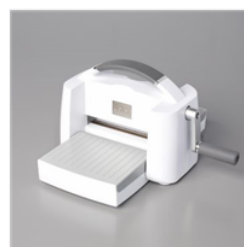
Add to Cart



Paper Trimmer -
152392

Price: \$25.00

Add to Cart



Stampin' Cut &
Emboss Machine -
149653

Price: \$125.00

Add to Cart