

Scary Cute Halloween Card

Project Sheet

Carol Buckalew
inkybeestampers@gmail.com
<https://www.inkybeestampers.com>



I wanted to share a Halloween card with you today using the Scary Cute Bundle (stamp set and dies). This little girl is trick or treating under the light of a full moon!

1. Card Cuts:

- Card Base - Cut 1 Gorgeous Grape cardstock to 8-1/2" x 5-1/2", score at 4-1/4"
- DSP Panel - Cut 1 Black & White Design 12" x 12" Designer Series Paper (Star pattern with white background) to 3-3/8" x 5-1/8"
- DSP Strip - Cut 1 Black & White DSP (star pattern with gray background) to 1-7/8" x 5-1/8"
- Scrap of Daffodil Delight for die cutting circle
- Scraps of Basic Black cardstock for die cutting bats and tree branch
- Sentiment Label - Cut 1 Basic White cardstock to 4" x 3/4"
- Sentiment Label Mat - Cut 1 Gorgeous Grape cardstock to 4-3/8" x 1"
- Inside Panel - Cut 1 Basic White cardstock to 5-3/8" x 4-1/8"
- Envelope Flap - Cut 1 coordinating DSP to 6" x 2-3/4"

2. Die cut the following:

- 1 circle in Daffodil Delight cardstock using the largest die from the Layering Circles

Scary Cute Halloween Card

Project Sheet

Carol Buckalew
inkybeestampers@gmail.com
<https://www.inkybeestampers.com>

Dies.

- 1 small and 1 large bat in Basic Black cardstock using the dies from the Scary Silhouettes Dies
 - 1 tree branch in Basic Black cardstock using the Harvest Dies
3. Place the yellow circle in the Stamparatus and stamp the little girl from the Scary Cute stamp set in Tuxedo Black Memento ink. Because this is a solid image, the Stamparatus helps you achieve a good stamped image, allowing you to stamp multiple times if needed. The image was stamped towards the bottom of the circle and slightly to the left of center (you'll need to make room for the tree branch and bat).
 4. Adhere the small bat on the yellow circle towards the top left.
 5. Adhere the tree branch on the yellow circle towards the top right, allowing the tree branch to slightly overhang the circle. You will need to trim the tree branch as the whole image won't fit on the circle.
 6. Stamp the greeting in the center of the sentiment label in Gorgeous Grape ink. Adhere the sentiment label to its black mat. Adhere the large die cut bat to the right of the sentiment label.
 7. Adhere the DSP panel to the card front, then adhere the DSP strip on top of this panel and position on the lower half of the card front.
 8. Adhere the yellow circle unit to the card front using Stampin' Dimensionals, making sure you are leaving room for the sentiment label.
 9. Adhere the sentiment label on the card front using Stampin' Dimensionals. The sentiment label will slightly overlap the yellow circle so you'll need to make sure you do not apply any Stampin' Dimensionals on the sentiment label where it overlaps the circle.
 10. Stamp the sentiment "Halloween Happiness!" on the inside white panel in Gorgeous Grape ink. Then, using the cluster of bats stamp from the Scary Cute stamp set, stamp the bats in the lower right corner and upper left corner of the panel using Tuxedo Black Memento ink. Adhere the panel to the inside of the card.

Scary Cute Halloween Card

Project Sheet

Carol Buckalew
inkybeestampers@gmail.com
<https://www.inkybeestampers.com>



11. Tie a small bow using Black & White Gingham Ribbon. Adhere the bow to the left side of the sentiment label using a Mini Glue dot.
12. Adhere the piece of coordinating DSP to the envelope flap then fussy cut around the flap to finish off the envelope.

The card is complete! This cute little card worked up quickly and was lots of fun to make!

Products used to create this card are included on the next page.

Scary Cute Halloween Card

Project Sheet

Carol Buckalew

inkybeestampers@gmail.com

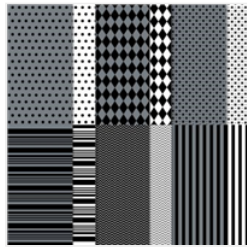
<https://www.inkybeestampers.com>



Scary Cute Bundle
(English) - 159852

Price: \$41.25

Add to Cart



Black & White
Designs 12" X 12"
(30.5 X 30.5 Cm)
Designer Series
Paper - 159861

Price: \$12.00

Add to Cart



Harvest Dies -
156504

Price: \$38.00

Add to Cart



Layering Circles
Dies - 151770

Price: \$35.00

Add to Cart



Black & White 1/4"
(6.4 Mm) Gingham
Ribbon - 156485

Price: \$7.00

Add to Cart



Basic White 8-1/2"
X 11" Cardstock -
159276

Price: \$10.25

Add to Cart



Gorgeous Grape
8-1/2" X 11"
Cardstock -
146987

Price: \$9.25

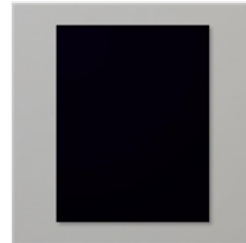
Add to Cart



Daffodil Delight 8-
1/2" X 11"
Cardstock -
119683

Price: \$9.25

Add to Cart



Basic Black 8-1/2"
X 11" Cardstock -
121045

Price: \$9.25

Add to Cart



Basic White
Medium Envelopes
- 159236

Price: \$7.50

Add to Cart



Gorgeous Grape
Classic Stampin'
Pad - 147099

Price: \$8.00

Add to Cart



Tuxedo Black
Memento Ink Pad -
132708

Price: \$6.00

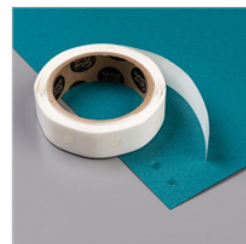
Add to Cart



Stampin'
Dimensionals -
104430

Price: \$4.25

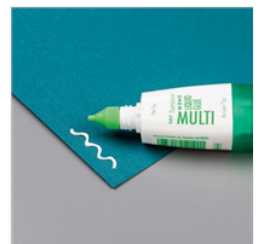
Add to Cart



Mini Glue Dots -
103683

Price: \$5.25

Add to Cart



Multipurpose
Liquid Glue -
110755

Price: \$4.00

Add to Cart

Scary Cute Halloween Card

Project Sheet

Carol Buckalew

inkybeestampers@gmail.com

<https://www.inkybeestampers.com>



Paper Trimmer -
152392

Price: \$25.00

Add to Cart



Stamparatus -
146276

Price: \$49.00

Add to Cart



Stampin' Cut &
Emboss Machine -
149653

Price: \$125.00

Add to Cart