

Painted Christmas Soap Gift Box

Project Sheet

Carol Buckalew
inkybeestampers@gmail.com
<https://www.inkybeestampers.com>



This little gift box perfectly holds a bar of hand-crafted soap (it smells wonderful, by the way!). What a fantastic gift for someone at Christmas and what a beautiful way to package this gift! I used the **Painted Christmas 12" x 12" Designer Series Paper**, the **Christmas Banners Stamp Set** and the **Christmas Banner Dies** to create this box. Read on for detailed instructions.

Box Measurements: 3-1/2" L x 2-1/4" W x 2" H

1. Card Cuts:

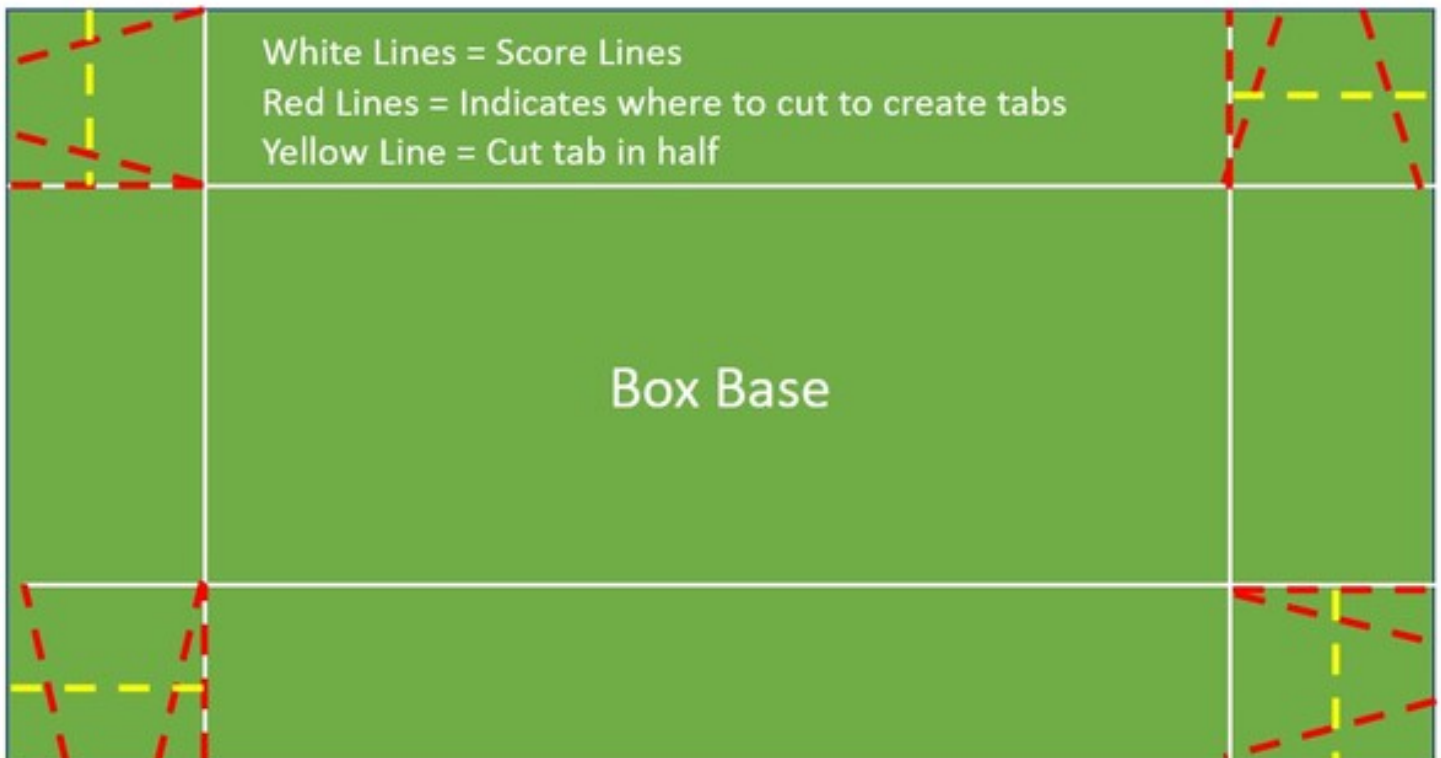
- Box Base - Cut 1 Garden Green cardstock to 7-1/2" x 6-1/4". Score at 2" on all four sides
- Box Lid - Cut 1 Garden Green cardstock to 5-1/2" x 4-1/4". Score at 1/16" on all four sides
- DSP-Top - Cut 1 Painted Christmas DSP to 3-1/2" x 2-1/4"
- DSP-Long Sides - Cut 2 Painted Christmas DSP to 3-1/2" x 3/4"
- DSP-Short Sides - Cut 2 Painted Christmas DSP to 2-1/4" x 3/4"
- Scraps of Garden Green and Evening Evergreen for die cuts
- Small scrap of DSP (light shaded pattern) for sentiment label

Painted Christmas Soap Gift Box

Project Sheet

Carol Buckalew
inkybeestampers@gmail.com
<https://www.inkybeestampers.com>

- Scrap of Garden Green cardstock for die cut sentiment label
 - Small square of Real Red Glimmer Paper
2. Cut and score the box base. Use a bone folder to burnish at all of the score lines. Following the diagram below. Cut on the red lines indicated on the diagram.
- For each corner, first cut up the score line until you reach the intersecting score line
 - Then, cut a wedge shape for each corner tab
 - Lastly, cut the tabs in half - Indicated by yellow lines. You will only cut the corner tabs in half for the Box Base!



3. Cut and score the box lid. Use a bone folder to burnish at all of the score lines. Following the diagram above, cut on the red lines indicated on the diagram. **IMPORTANT NOTE: There is no need to cut the corner tabs in half for the box lid!**
- Here is what the Box Base and Box Lid look like after being cut.

Painted Christmas Soap Gift Box

Project Sheet

Carol Buckalew
inkybeestampers@gmail.com
<https://www.inkybeestampers.com>



4. Next, turn the box base and box lid over to their "right" sides (or the outside of the base and lid) and apply a piece of Tear & Tape to each corner tab. Remove tape covers and begin at one corner and tuck corner tab inside and adhere to the inside of the box. Rotate the piece, and adhere the next corner tab inside. Be sure that the tab is square to the side before adhering. Refer to diagram below. Do this for both the box base and box lid.

Painted Christmas Soap Gift Box

Project Sheet

Carol Buckalew
inkybeestampers@gmail.com
<https://www.inkybeestampers.com>



Below is a photo showing how the corner tab fits inside the base and lid.



Painted Christmas Soap Gift Box

Project Sheet

Carol Buckalew
inkybeestampers@gmail.com
<https://www.inkybeestampers.com>

5. Using a piece of light patterned DSP from the Painted Christmas paper, stamp the Christmas banner image (refer to photo at top of page) in Evening Evergreen, then stamp the sentiment "'Tis The Season" inside of the stamped banner.
6. Stamp two holly leaves in Evening Evergreen ink onto a scrap piece of Garden Green cardstock.
7. Die cut the following from the Christmas Banners Dies:
 - Use the coordinating die to cut out the stamped DSP banner/sentiment
 - Cut a second banner using the same die. This die cut will be used to reinforce the banner cut from the DSP.
 - Die cut 2 pine boughs from Garden Green cardstock
 - Die cut 1 pine bough from Evening Evergreen cardstock
 - Die cut two greenery sprigs from Evening Evergreen cardstock (I cut two different sprigs)
 - Die cut the berries from Real Red Glimmer Paper (the die cuts 5 berries at a time)
 - Die cut the two holly leaves
8. Adhere the DSP paper measuring 3-1/2" x 2-1/4" to the top of the lid. Adhere the side strips to the lid.
9. Using liquid glue, adhere the pine boughs and other die cut greenery in the upper right and lower left corners of the top of the lid. Note: Leave the center of the lid clear to make room for the bough and sentiment label.
10. Adhere the DSP sentiment label to the blank die cut banner. This will provide extra strength to the banner.
11. Place the lid onto the box base and using a length of Real Red ribbon from the Real Red & Garden Green Combo Pack, tie a bow at the top of the box. Trim the ribbon ends as needed.
12. Using Stampin' Dimensionals, double stack Dimensionals on the right and left of the banner. Place one Dimensional on the right and one on the left. Remove the Dimensional covers, and stack another Dimensional on top. Remove the covers of these Dimensionals and adhere the sentiment label to the box lid. **Note: Double stacking the Dimensionals on the sentiment label will allow the recipient of the gift box to untie and re-tie the ribbon. To re-tie, the ribbon would simply be slipped under the sentiment label and the bow can be tied to the side of the box, then rotated back in place.**
13. Adhere the die cut holly leaves to the sentiment label. I placed mine on the right side. Glue one red glitter berry on top of the holly leaves where the stems meet. Adhere the remaining berries on top of the pine boughs/greenery.

Painted Christmas Soap Gift Box

Project Sheet

Carol Buckalew
inkybeestampers@gmail.com
<https://www.inkybeestampers.com>



This pretty little box is sure to make the recipient smile! I hope you enjoyed this project. Nothing like Christmas in July!

Painted Christmas Soap Gift Box

Project Sheet

Carol Buckalew
inkybeestampers@gmail.com
<https://www.inkybeestampers.com>

Products used to create this project are included on the next page. At the time I wrote up this project sheet, the Christmas Banners Bundle and Real Red & White Glimmer Paper and the Real Red & Garden Green ribbon combo pack were not showing on the product list. However, these items are now available in the July-December 2022 Mini Catalog.

Painted Christmas Soap Gift Box

Project Sheet

Carol Buckalew
inkybeestampers@gmail.com
<https://www.inkybeestampers.com>



Painted Christmas
12" X 12" (30.5 X
30.5 Cm) Designer
Series Paper -
156292

Price: \$11.50

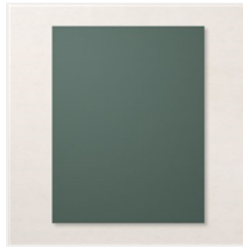
[Add to Cart](#)



Garden Green 8-
1/2" X 11"
Cardstock -
102584

Price: \$9.25

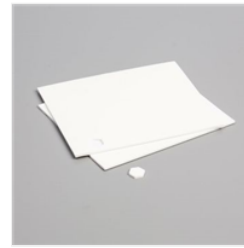
[Add to Cart](#)



Evening Evergreen
8-1/2" X 11"
Cardstock -
155574

Price: \$9.25

[Add to Cart](#)



Stampin'
Dimensionals -
104430

Price: \$4.25

[Add to Cart](#)



Multipurpose
Liquid Glue -
110755

Price: \$4.00

[Add to Cart](#)



Tear & Tape
Adhesive - 154031

Price: \$7.00

[Add to Cart](#)



Paper Trimmer -
152392

Price: \$25.00

[Add to Cart](#)



Stampin' Cut &
Emboss Machine -
149653

Price: \$125.00

[Add to Cart](#)