

Sweet Songbirds

Project Sheet

Carol Buckalew
inkybeestampers@gmail.com
<https://www.inkybeestampers.com>



This adorable little bird is tweeting out a greeting. Here is another sneak peek of new products from the upcoming 2022-2023 Annual Catalog! I hope this project inspires you to check out this adorable bundle. The new catalog is being released on May 3.

Items used on this card that will be available to customers on May 3, 2022 include:

- Sweet Songbirds Bundle (stamp set and punch)
- Sweet Sorbet cardstock
- Sweet Sorbet and Parakeet Party Stampin' Pads

1. Card Cuts:

- Card Base - Cut 1 Sweet Sorbet cardstock to 8-1/2" x 5-1/2", score at 4-1/4"
- Panel - Cut 1 Crumb Cake cardstock to 5-3/8" x 4-1/8"
- Panel - Cut 1 Basic White cardstock to 5-1/4" x 4"
- Scraps of White and Sweet Sorbet cardstock for sentiment label, birds wing, breast and body and the bird's nest
- Scrap of Daffodil Delight for birds beak

Sweet Songbirds

Project Sheet

Carol Buckalew

inkybeestampers@gmail.com

<https://www.inkybeestampers.com>

- Inside Panel - Cut 1 Basic White cardstock to 5-1/4" x 4"
- 2. Start off by stamping the bird's wing in Sweet Sorbet ink onto a piece of Basic White cardstock.
- 3. Using the Songbird Builder Punch, punch out the bird's body in Sweet Sorbet. Punch the bird's beak from Daffodil Delight and punch the bird's breast from Basic White cardstock. Punch the bird's wing from the white cardstock that you stamped onto using the Sweet Sorbet ink.
- 4. I chose to have the bird facing sideways. Decide on placement of the bird's beak, then using the "eyes" stamp, stamp a single eye in Tuxedo Black Memento ink onto the bird's face.
- 5. Using glue, assemble the bird and set aside.
- 6. On the Basic White card panel, stamp three tree branches in Crumb Cake ink. I stamped one branch at the top of the panel coming in from the right, and two branches on the lower portion of the panel coming in from the left.
- 7. Next, stamp the leaves onto the ends of the branches in Parakeet Party ink, and stamp multiple single flowers in Sweet Sorbet around the leaves that you just stamped.
- 8. Using the dark shade of Crumb Cake Stampin' Blends, darken the bottoms of the tree branches and give the suggestion of buds coming off the branches. Using the dark shade of Parakeet Party Stampin' Blends, give the suggestion of veins in the leaves. Using the Daffodil Delight Stampin' Blends, color the centers of the flowers.
- 9. Using a sponge dauber, blend Balmy Blue ink on the front white card panel to indicate sky. The ink blending does not need to be fussy!
- 10. Stamp the same image of the tree branch, leaves and flowers onto the inside panel, the envelope front and the envelope flap, using Stampin' Blends to enhance the stamped images as you did for the front panel.

Sweet Songbirds

Project Sheet

Carol Buckalew
inkybeestampers@gmail.com
<https://www.inkybeestampers.com>



11. Adhere the white card front panel to the Crumb Cake panel.
12. Using the wood plank stamp, stamp in Crumb Cake, then stamp the greeting in Tuxedo Black Memento ink "A Little Bird Told Me..." onto a piece of scrap white cardstock. Fussy cut the sentiment label.
13. Stamp the bird's nest onto a piece of scrap white cardstock in Crumb Cake ink. Using Crumb Cake Stampin' Blends, darken the nest around the edges and bottom to give it dimension then fussy cut around the image.
14. Stamp the greeting in Tuxedo Black Memento ink onto the inside panel and adhere the inside panel to the inside of the card.
15. Using twine, cut two small pieces and tie a knot to one end of each piece. We're going to use this twine to "hang" the sentiment label from the tree branch! Determine placement on the tree branch for the twine to hang down, then apply a small drop of glue to the tree branch and glue the knotted ends of the twine to the tree branch. Using Stampin' Seal, adhere the other ends of the twine to the card front and in a place where it will be covered by the sentiment label. Using Stampin' Dimensionals, adhere the sentiment label over the ends of the twine.
16. Determine placement of the bird's nest on the lower branches and adhere to card front using

Sweet Songbirds

Project Sheet

Carol Buckalew

inkybeestampers@gmail.com

<https://www.inkybeestampers.com>

Stampin' Dimensionals.

17. Using glue, adhere the bird to the card front, tucking the bird slightly into the nest.

18. Adhere the panels to the card front.

The card is complete! I already have another card idea for the Sweet Songbirds Bundle and can't wait to show you! Keep an eye out for this future project!

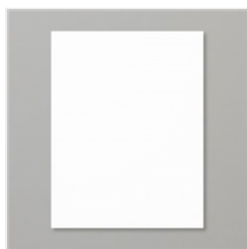
Products used in this project that are available now are include on the next page.

Sweet Songbirds

Project Sheet

Carol Buckalew

inkybeestampers@gmail.com
<https://www.inkybeestampers.com>



Basic White 8-1/2"
X 11" Cardstock -
159276

Price: \$9.75

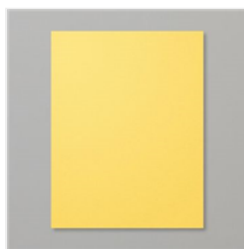
Add to Cart



Crumb Cake 8-1/2"
X 11" Cardstock -
120953

Price: \$8.75

Add to Cart



Daffodil Delight 8-
1/2" X 11"
Cardstock -
119683

Price: \$8.75

Add to Cart



Basic White
Medium Envelopes
- 159236

Price: \$7.50

Add to Cart



Crumb Cake
Classic Stampin'
Pad - 147116

Price: \$7.50

Add to Cart



Tuxedo Black
Memento Ink Pad -
132708

Price: \$6.00

Add to Cart



Crumb Cake
Stampin' Blends
Combo Pack -
154882

Price: \$9.00

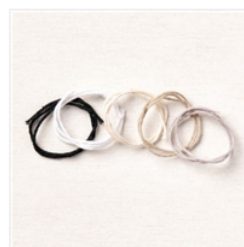
Add to Cart



Daffodil Delight
Stampin' Blends
Combo Pack -
154883

Price: \$9.00

Add to Cart



Baker's Twine
Essentials Pack -
155475

Price: \$11.00

Add to Cart



Stampin' Seal -
152813

Price: \$8.00

Add to Cart



Multipurpose
Liquid Glue -
110755

Price: \$4.00

Add to Cart



Paper Trimmer -
152392

Price: \$25.00

Add to Cart

Add All to Cart